

★因产品开发及技术改进等原因，实际销售产品可能与本手册中展示的有所不同，本公司保留相关权利。产品若有改动，恕不另行通知。  
Our company will reserve relevant rights about changes of the manual due to development of products and technical improvements.



**上海本焯 (xuān) 电气科技有限公司**  
SHANGHAI NATURE BEYOND ELECTRIC TECHNOLOGY CO.,LTD.

地址：上海市闵行区新龙路 1333 弄 108 号 708 室 (万科·虹桥云)  
电话：021-6658 1687 021-5308 1687  
手机：139 1682 4787 传真：021-5308 2129  
E-mail: qwifm@qwifm.com  
Http://www.qwifm.com

Address: Room 708, No. 108th, Lane 1333, Xinlong Road,  
Minhang, Shanghai (Vanke Hongqiao Cloud)  
Tel: 0086-21-6610 1687 0086-21-5308 1687  
Mobile: 0086-139 1682 4787 Fax: 0086-21-5308 2129  
E-mail: qwifm@qwifm.com Http://www.qwdhc.com





# 开关电源

Switching Power Supply



两年质保期 2 years warranty

导轨式品种齐全 Completely din rail type variety

纹波系数小 Small ripple coefficient

# 我们不总是对的， 但总是走在寻找对的路上。

—  
We are not always right,  
but we are always on the way to right.

/ 我们一直在路上 ..... /  
We've been on our way..... /

---


# Brief Introduction

企业简介

上海本焯电气科技有限公司其前身是一家集设计开发、生产、销售于一体的专业的开关电源的制造商。我公司拥有独立的研发部门，专业的生产团队，并吸取众家之长，所设计的产品在品质、外观均可与任何厂家媲美。

我们产品涵盖电感接近传感器、电容式接近传感器、霍尔传感器、光电传感器、固态继电器、固态调压器及开关电源。我们一直致力于通过不断研发和质量管理，以高品质和多种类的产品及优质的服务来满足用户的需要。

公司以完善的组织架构和技术实力，保证了生产效率，以高度的灵活性为客户提供优质的服务，大部分产品通过欧共体 CE 认证，并始终贯彻执行“今天的质量，明天的市场”的质量方针，使企业得到了飞速的发展。

 在中国已被业界公认为自动化行业的领导品牌，并日益成为全球工控领域的知名品牌。

Shanghai Nature Beyond Electric Technology Co.,LTD is a power supply manufacturer, specialized in research and development, production and marketing. We have independent department and technical office for research and development. We also manage to accumulate other companies' strong points so that the products could compare with others about both the quality and the outward appearances.

Our products include inductive proximity sensors, capacitive proximity sensors, Hall sensors, photoelectric sensors, solid state relays, solid state voltage regulators and switching power supplies. We are committed to meeting the needs of our customers with high quality and diverse products and quality services through continuous research and development and quality management.

With perfect organizational structure and technical strength, the company guarantees production efficiency and provides customers with high-quality service with high flexibility. Most of the products have passed the CE certification of the European Community and have always implemented the "Today's Quality, Tomorrow's Market". The quality policy has enabled the company to develop rapidly.

QWIFM, has been the leading brand in automated industry market and gained its global reputation among industrial areas.

# Qualification

## 资质证书

高品质是赢得市场的保证，而有效的现代管理和质量体系是支撑高品质的前提，力求突破创新的精神，作为不断向前的动力追求精湛质量。

High-quality is an assurance to win the market, and effective modern management system and quality of support is a prerequisite for high-quality, and we strive to break the spirit of innovation, as the driving force for continuous pursuit of exquisite quality.



---

# Contents

---

## 目录

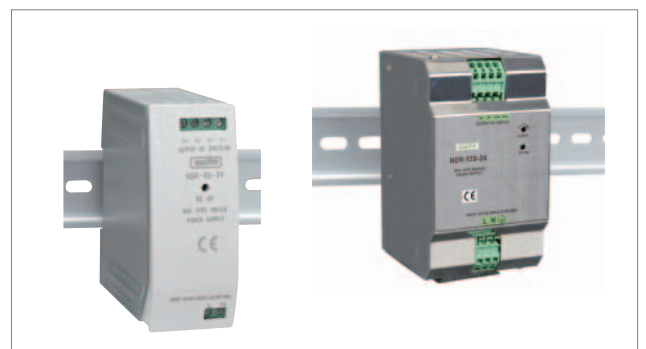
---

### 开关电源

- 01-02 IDR 系列单组导轨式开关电源
- 03-04 IDRP 系列单组导轨式开关电源
- 05-07 IMDR 系列薄型导轨式开关电源
- 08-10 NDR 系列单组导轨式开关电源
- 11-14 LRS 系列单组小型开关电源

### Switching Power Supply

- 01-02 IDR Series Single Output DIN–Rail Switching Power Supply
- 03-04 IDRP Series Single Output DIN–Rail Switching Power Supply
- 05-07 IMDR Series Slim Design Single Output DIN–Rail Switching Power Supply
- 08-10 NDR Series Single Output Din–Rail Switching Power Supply
- 11-14 LRS Series Single Output Miniature Switching Power Supply





尺寸 Dimensions: 78 × 93 × 56mm

30W 单组导轨式 30W Single Output DIN-Rail Type

型号 Model Number	输出 Output	误差值 Tol	纹波和噪音 R&N	效率 Effi
IDR-30-5	5V,0~4A	± 1%	80mV	74%
IDR-30-12	12V,0.0~2.5A	± 1%	120mV	81%
IDR-30-15	15V,0.0~2A	± 1%	120mV	82%
IDR-30-24	24V,0.0~1.5A	± 1%	150mV	83%

## 产品规格

- AC 全范围输入
- 安装在横栏托架 TS35/7.5 或 15
- 保护 : 短路 / 过载 / 过压
- 认证 : CE
- LED 显示工作状态
- 自冷散热
- 100% 满负荷烧机测试
- 2 年质量保证期
- AC 输入电压范围 : 85~264VAC, 47~63Hz, 120~370VDC
- AC 冲击电流 : 冷启动, 27A at 115VAC 36A at 230VAC
- DC 可调范围 : ± 10% 的额定输出电压
- 过载保护 : 105%~150% 的额定输出电压
- 过压保护 : 115%~135% 的额定输出电压
- 耐压性 : I/P-O/P: 3KVAC、I/P-FG: 1.5KVAC、O/P-FG: 0.5KVAC 在 1 分钟内
- 工作温度 : -10℃ ~60℃
- 连接 : I/P: 4 位 螺丝横栏端子
- 重量 / 包装 : 0.27kg, 48pcs/16.5kg/1.02CUFT

## SPECIFICATION

- Universal AC input/ Full range
- Installed on DIN rail TS35/7.5 or 15
- Protections: Short circuit/Over load/Over voltage
- Approvals: CE
- LED Showing the working state
- Cooling by free air convection
- 100% full load burn-in test
- 2-years warranty
- AC input voltage range: 85~264VAC, 47~63Hz, 120~370VDC
- AC inrush current: cold start, 27A at 115VAC; 36A at 230VAC
- DC adjustment range: ± 10% rated output voltage
- Over-load protection: 105%~150% rated output voltage
- Over-voltage protection: 115%~135%, rated output voltage
- Withstand voltage: I/P-O/P: 3KVAC、I/P-FG: 1.5KVAC、O/P-FG: 0.5KVAC in 1 minute
- Working Temperature: -10℃ ~60℃
- Connection: I/P: 2 poles O/P: Screw DIN terminal with 4 poles
- Weight/Packing: 0.27kg: 48pcs/16.5kg/1.02CUFT



尺寸 Dimensions: 78 × 93 × 56mm

45W 单组导轨式 45W Single Output DIN-Rail Type

型号 Model Number	输出 Output	误差值 Tol	纹波和噪音 R&N
IDR-45-5	5.0V,0~6A	± 2%	100mV
IDR-45-12	12V,0.0~3.75A	± 1%	200mV
IDR-45-15	15V,0.0~3A	± 1%	240mV
IDR-45-24	24V,0.0~2.0A	± 1%	480mV

## 产品规格

- AC 全范围输入
- 安装在横栏托架 TS35/7.5 或 15
- 保护 : 短路 / 过载 / 过压
- 认证 : CE
- LED 显示工作状态
- 自冷散热
- 100% 满负荷烧机测试
- 2 年质量保证期
- AC 输入电压范围 : 85~264VAC, 47~63Hz, 120~370VDC
- AC 冲击电流 : 冷启动, 27A at 115VAC 36A at 230VAC
- DC 可调范围 : ± 10% 的额定输出电压
- 过载保护 : 105%~150% 的额定输出电压
- 过压保护 : 115%~135% 的额定输出电压
- 耐压性 : I/P-O/P: 3KVAC、I/P-FG: 1.5KVAC、O/P-FG: 0.5KVAC 在 1 分钟内
- 工作温度 : -10℃ ~60℃
- 连接 : I/P: 4 位 螺丝横栏端子
- 重量 / 包装 : 0.27kg, 48pcs/16.5kg/1.02CUFT

## SPECIFICATION

- Universal AC input/ Full range
- Installed on DIN rail TS35/7.5 or 15
- Protections: Short circuit/Over load/Over voltage
- Approvals: CE
- LED Showing the working state
- Cooling by free air convection
- 100% full load burn-in test
- 2-years warranty
- AC input voltage range: 85~264VAC, 47~63Hz, 120~370VDC
- AC inrush current: cold start, 27A at 115VAC; 36A at 230VAC
- DC adjustment range: ± 10% rated output voltage
- Over-load protection: 105%~150% rated output voltage
- Over-voltage protection: 115%~135%, rated output voltage
- Withstand voltage: I/P-O/P: 3KVAC、I/P-FG: 1.5KVAC、O/P-FG: 0.5KVAC in 1 minute
- Working Temperature: -10℃ ~60℃
- Connection: I/P: 2 poles O/P: Screw DIN terminal with 4 poles
- Weight/Packing: 0.27kg, 48pcs/16.5kg/1.02CUFT



尺寸 Dimensions: 78 × 93 × 56mm

60W 单组导轨式 60W Single Output DIN-Rail Type

型号 Model Number	输出 Output	误差值 Tol	纹波和噪音 R&N	效率 Effi
IDR-60-5	5.0V,0~8A	± 2%	80mV	76%
IDR-60-12	12V,0~4.5A	± 1%	120mV	82%
IDR-60-15	15V0.0~4.0A	± 1%	120mV	83%
IDR-60-24	24V0.0~2.5A	± 1%	150mV	84%

## 产品规格

- AC 全范围输入
- 安装在横栏托架 TS35/7.5 或 15
- 保护：短路 / 过载 / 过压
- 认证：CE
- LED 显示工作状态
- 自冷散热
- 100% 满负荷烧机测试
- 2 年质量保证期
- AC 输入电压范围：85~264VAC,47~63Hz,120~370VDC
- AC 冲击电流：冷起动，27A at 115VAC 36A at 230VAC
- DC 可调范围：± 10% 的额定输出电压
- 过载保护：105%~150% 的额定输出电压
- 过压保护：115%~135% 的额定输出电压
- 耐压性：I/P-O/P:3KVAC、I/P-FG:1.5KVAC、O/P-FG:0.5KVAC 在 1 分钟内
- 工作温度：-10℃ ~60℃
- 连接：I/P: 4 位 螺丝横栏端子
- 重量 / 包装：0.27kg, 48PCS/16.5kg/1.02CUFT

## SPECIFICATION

- Universal AC input/ Full range
- Installed on DIN rail TS35/7.5 or 15
- Protections: short circuit/Over load/Over voltage
- Approvals:CE
- LED Showing the working state
- Cooling by free air convection
- 100% full load burn-in test
- 2-years warranty
- AC input voltage range: 85~264VAC,47~63Hz,120~370VDC
- AC inrush current: cold start, 27A at 115VAC; 36A at 230VAC
- DC adjustment range: ± 10% rated output voltage
- Over-load protection:105%~150% rated output voltage
- Over-voltage protection:115%~135% rated output voltage
- Withstand voltage: I/P-O/P:3KVAC、I/P-FG:1.5KVAC、O/P-FG:0.5KVAC in 1 minute
- Working Temperature:-10℃ ~60℃
- Connection: I/P: 2poles O/P: Screw DIN terminal with 4 poles
- Weight/Packing: 0.27kg, 48pcs/16.5kg/1.02CUFT

尺寸 Dimensions: 65.5 × 125.2 × 100mm

75W 单组导轨式 75W Single Output DIN-Rail Type

型号 Model Number	输出 Output	误差值 Tol	纹波和噪音 R&N	效率 Effi
IDR-75-12	12V 0.0~6.2A	± 2%	100mV	76%
IDR-75-24	24V 0.0~3.1A	± 1%	150mV	80%
IDR-75-48	48V0.0~1.5A	± 1%	240mV	81%

## 产品规格

- AC 输入转换由开关选择
- 安装在横栏托架 TS35/7.5 或 15
- 保护：短路 / 过载 / 过压 / 过温
- 认证：CE
- LED 显示工作状态：
- 自冷散热
- 100% 满负荷烧机测试
- 2 年质量保证期
- AC 输入电压范围：85~132VAC/170~264VAC; 开关选择
- AC 冲击电流：冷起动，30A at 115VAC,60A at 230VAC
- DC 可调范围：12:12~14,24:24~28V,48:48~53V
- 过载保护：105%~150% 的额定输出电压
- 过压保护：120%~140% r 的额定输出电压
- 耐压性：I/P-O/P:3KVAC、I/P-FG:1.5KVAC、O/P-FG:0.5KVAC 在 1 分钟内
- 工作温度：-10℃ ~60℃
- 连接：I/P:3 位 螺丝横栏端子
- 重量 / 包装：0.65kg, 20PCS/13kg/1.1CUFT

## SPECIFICATION

- AC input, selectable by switch
- Installed on DIN rail TS 35 /7.5 or 15
- Protections:short circuit/Overload/Over voltage/Over temp
- Approvals: CE
- LED Showing the working state
- Cooling by free air convection
- 100%full load burn-in test
- 2-years warranty
- AC input voltage range: 85~132VAC/170~264VAC selectable by switch
- AC inrush current: Cold start,30A at 115VAC,60A at 230VAC
- DC adjustment range: 12:12~14,24:24~28V,48:48~53V
- Over-load protection:105%~150% rated output voltage
- Over-voltage protection: 120%~140% rated output voltage
- Withstand voltage: I/P-O/P:3KVAC、I/P-FG:1.5KVAC、O/P-FG:0.5KVAC in 1 minute
- Working temperature:-10℃ ~60℃
- Connection: I/P: Screw DIN terminal with 3 poles
- Weight/Packing: 0.65kg, 20PCS/13kg/1.1CUFT



## 单组导轨式开关电源

## Single Output DIN-Rail Switching Power Supply



尺寸 Dimensions: 65.5 × 125.2 × 100mm

120W 单组导轨式 30W Single Output DIN-Rail Type

型号 Model Number	输出 Output	误差值 Tol	纹波和噪音 R&N	效率 Effi
IDR-120-12	12V,0.0~10A	± 2%	80mV	80%
IDR-120-24	24V,0.0~5.0A	± 1%	80mV	84%
IDR-120-48	48V,0.0~2.5A	± 1%	100mV	84%



尺寸 Dimensions: 125.5 × 125.2 × 100mm

240W 单组导轨式 240W Single Output DIN-Rail Type

型号 Model Number	输出 Output	误差值 Tol	纹波和噪音 R&N	效率 Effi	功率 Power
IDRP-240-24	24V 0.0~10.0A	± 1%	80mV	84%	240W
IDRP-240-48	48V 0.0~5.0A	± 1%	150mV	85%	240W

## 产品规格

- AC 输入转换由开关选择
- 安装在横栏托架 TS35/7.5 或 15
- 保护：短路 / 过载 / 过压 / 过温
- 认证：CE
- LED 显示工作状态
- 自冷散热
- 100% 满负荷烧机测试
- 2 年质量保证期
- AC 输入电压范围：85~132VAC/170~264VAC; 开关选择
- AC 冲击电流：冷启动,30A at 115VAC,60A at 230VAC
- DC 可调范围：12:12~14,24:24~28V,48:48~53V
- 过载保护：105%~150% 的额定输出电压
- 过压保护：120%~140% 的额定输出电压
- 耐压性：I/P-O/P:3KVAC、I/P-FG:1.5KVAC、O/P-FG:0.5KVAC 在 1 分钟内
- 工作温度：-10℃ ~60℃
- 连接：I/P:3 位 螺丝横栏端子
- 重量 / 包装：0.7Kg, 20PCS/16.5Kg/1.1CUFT

## SPECIFICATION

- AC input, selectable by switch
- Installed on DIN rail TS 35 /7.5 or 15
- Protections:short circuit/Overload/Over voltage/Over temp
- Approvals: CE
- LED Showing the working state
- Cooling by free air convection
- 100%full load burn-in test
- 2-years warranty
- AC input voltage range: 85~132VAC/170~264VAC, selectable by switch
- AC inrush current: Cold start,30A at 115VAC,60A at 230VAC
- DC adjustment range: 12:12~14,24:24~28V,48:48~53V
- Over-load protection:105%~150% rated output voltage
- Over-voltage protection: 120%~140% rated output voltage
- Withstand voltage: I/P-O/P:3KVAC、I/P-FG:1.5KVAC、O/P-FG:0.5KVAC in 1 minute
- Working temperature: -10℃ ~60℃
- Connection: I/P: Screw DIN terminal with 3 poles
- Weight/Packing: 0.7kg, 20PCS/16.5kg/1.1CUFT

## 产品规格

- 全范围输入
- 安装在横栏托架 TS35/7.5 或 15
- 保护：短路 / 过载 / 过压 / 过温
- 内置 PFC 功率因数校正
- 认证：CE
- LED 显示工作状态
- 自冷散热
- 100% 满负荷烧机测试
- 2 年质量保证期
- AC 输入电压范围：85~264VAC
- AC 冲击电流：冷启动,30A at 115VAC/50A at 230VAC
- DC 可调范围：24~28/48~53V
- 过载保护：105~150% 关断电流, 自动恢复
- 过压保护：30~36V/54~60V 关闭输出, 重新启动
- 启动、上升、保持时间：230VAC 满载时 800ms, 40ms, 20ms
- 耐压性：I/P-O/P:3KVAC、I/P-FG:1.5KVAC、O/P-FG:0.5KVAC 在 1 分钟内
- 工作温度：-10℃ ~55℃
- 连接：输入端 3 点端子, 输出端 4 点螺丝端子 (DIN TYPE)
- 重量 / 包装：1.2kg, 12PCS/15.5kg/1.2CUFT

## SPECIFICATION

- Universal AC input/ Full range
- Installed on DIN rail TS 35 /7.5 or 15
- Protections: Short circuit/Overload/Over voltage/Over temp
- Built-in PFC(power factor correction)
- Approvals: CE
- LED Showing the working state
- Cooling by free air convection
- 100%full load burn-in test
- 2-years warranty
- AC input voltage range: 85~264VAC
- AC inrush current: Cold start, 30A at 115VAC, 50A at 230VAC
- DC adjustment range: 24~28/48~53V
- Over-load protection: 105~150% shutdown current, automatically resume
- Over-voltage protection: 30~36V/54~60V for output shutdown and restart
- Setup, rise, hold up time: 800ms, 40ms, 20ms at full load and 230VAC
- Withstand voltage: I/P-O/P:3KVAC、I/P-FG:1.5KVAC、O/P-FG:0.5KVAC in 1 minute
- Working temperature: -10℃ ~55℃
- Connection: I/P: 3 poles O/P: DIN type screw terminals with 4 poles
- Weight/Packing: 1.2kg, 12pcs/15.5kg/1.2 CUFT



尺寸 Dimensions: 227 × 125.2 × 100mm

480W 单组导轨式 480W Single Output DIN-Rail Type

型号 Model Number	输出 Output	误差值 Tol	纹波和噪音 R&N	效率 Effi	功率 Power
IDRP-480-24	24V 0~20A	±1%	120mV	89%	480W
IDRP-480-48	48V 0~10A	±1%	120mV	89%	480W

### 产品规格

- AC 输入转换由开关选择
- 安装在横栏托架 TS35/7.5 或 15
- 保护：短路 / 过载 / 过压 / 过温
- 认证：CE
- LED 指示电源打开
- 自冷散热
- 100% 满负荷烧机测试
- 2 年质量保证期
- AC 输入电压范围：90~132VAC/180~264VAC; 开关选择
- AC 冲击电流：冷启动, 30A at 115VAC/50A at 230VAC
- DC 可调范围：24~28/48~53V
- 过载保护：105~150% 关断电流，自动恢复
- 过压保护：30~36V/54~60V 关闭输出，重新启动
- 启动、上升、保持时间：230VAC 满载时 1200ms, 40ms, 16ms
- 耐压性：I/P-O/P:3KVAC、I/P-FG:1.5KVAC、O/P-FG:0.5KVAC 在 1 分钟内
- 工作温度：-20℃ ~50℃
- 连接：输入端 3 点端子，输出端 4 点螺丝端子 (DIN TYPE)
- 重量 / 包装：2.4kg, 6PCS/15kg/1.75CUFT

### SPECIFICATION

- Universal AC input/ Full range
- Installed on DIN rail TS 35 /7.5 or 15
- Protections:short circuit/Overload/Over voltage/Over temp
- Approvals: CE
- LED indicating the working state
- Cooling by free air convection
- 100%full load burn-in test
- 2-years warranty
- AC input voltage range: 90~132VAC/180~264VAC, selectable by switch
- AC inrush current: Cold start,30A at 115VAC, 50A at 230VAC
- DC adjustment range: 24~28/48~53V
- Over-load protection: 105~150% shutdown current, automatically resume
- Over-voltage protection: 30~36V/54~60V for output shutdown and restart
- Setup, rise, hold up time: 1200ms, 40ms, 16ms at full load and 230VAC
- Withstand voltage: I/P-O/P:3KVAC、I/P-FG:1.5KVAC、O/P-FG:0.5KVAC in 1 minute
- Working temperature: -20℃ ~50℃
- Connection: I/P: 3 poles O/P: DIN type screw terminals with 4 poles
- Weight/Packing: 2.4kg, 6PCS/15kg/1.75CUFT

## 薄型导轨式开关电源

## Slim Design Single Output DIN-Rail Switching Power Supply



尺寸 Dimensions: 22.5 × 90 × 100mm

10W 薄型导轨式10W Slim Design Single Output DIN Rail Type

型号 Model Number	输出 Output	误差值 Tol	纹波和噪音 R&N	效率 Effi
IMDR-10-5	5V, 0~2.0A	± 2%	80mV	77%
IMDR-10-12	12V, 0~0.84A	± 1%	120mV	80%
IMDR-10-15	15V, 0~0.67A	± 1%	120mV	81%
IMDR-10-24	24V, 0~0.42A	± 1%	150mV	84%

## 产品规格

- AC 全范围输入
- 安装在横栏托架 TS35/7.5 或 15
- 保护：短路 / 过载 / 过压
- 认证：CE
- LED 显示工作状态
- 自冷散热
- 100% 满负荷烧机测试
- 2 年质量保证期
- AC 输入电压范围：85~264VAC;120~370VDC
- AC 冲击电流：冷启动,35A at 115VAC,70A at 230VAC
- DC 可调范围：± 10% 的额定输出电压
- 过载保护：105~150% 关断电流，自动恢复
- 过压保护：115%~135% 额定输出电压
- 耐压性：I/P-O/P:3KVAC、I/P-FG:1.5KVAC、O/P-FG:0.5KVAC 在 1 分钟内
- 工作温度：-20℃ ~+50℃
- 连接：I/P: 3 位 O/P: 3 位螺丝端子
- 重量 / 包装：0.17Kg, 72PCS/13.2kg/0.91CUFT

## SPECIFICATION

- Universal AC input/ Full range
- Installed on DIN rail TS35/7.5 or 15
- Protections: Short circuit/Over load/Over voltage
- Approvals:CE
- LED Showing the working state
- Cooling by free air convection
- 100% full load burn-in test
- 2-years warranty
- AC input voltage range: 85~264VAC;120~370VDC
- AC inrush current: Cold start,35A at 115VAC,70A at 230VAC
- DC adjustment range: ± 10%rated output voltage
- Over-load protection: 105~150% shutdown current, automatically resumed
- Over-voltage protection: 115%~135% rated output voltage
- Withstand voltage: I/P-O/P:3KVAC、I/P-FG:1.5KVAC、O/P-FG:0.5KVAC in 1 minute
- Working temperature: -20℃ ~+50℃
- Connection: I/P: 3 poles, O/P: Screw terminal(DIN type) with 3 poles
- Weight/Packing: 0.17kg, 72PCS/13.2kg/0.91CUFT



尺寸 Dimensions: 22.5 × 90 × 100mm

20W 薄型导轨式 20W Slim Design Single Output DIN Rail Type

型号 Model Number	输出 Output	误差值 Tol	纹波和噪音 R&N	效率 Effi
IMDR-20-5	5V, 0~4.0A	± 2%	80mV	76%
IMDR-20-12	12V, 0~1.67A	± 1%	120mV	80%
IMDR-20-15	15V, 0~1.34A	± 1%	120mV	81%
IMDR-20-24	24V, 0~1.00A	± 1%	150mV	84%

## 产品规格

- AC 全范围输入
- 安装在横栏托架 TS35/7.5 或 15
- 保护：短路 / 过载 / 过压
- 认证：CE
- LED 显示工作状态
- 自冷散热
- 100% 满负荷烧机测试
- 2 年质量保证期
- AC 输入电压范围：85~264VAC;120~370VDC
- AC 冲击电流：冷启动,35A at 115VAC,70A at 230VAC
- DC 可调范围：± 10% 的额定输出电压
- 过载保护：105~150% 关断电流，自动恢复
- 过压保护：115%~135% 额定输出电压
- 耐压性：I/P-O/P:3KVAC、I/P-FG:1.5KVAC、O/P-FG:0.5KVAC 在 1 分钟内
- 工作温度：-20℃ ~+50℃
- 连接：I/P: 3 位 O/P: 3 位螺丝端子
- 重量 / 包装：0.19kg, 72PCS/14.7kg/0.91CUFT

## SPECIFICATION

- Universal AC input/ Full range
- Installed on DIN rail TS35/7.5 or 15
- Protections: Short circuit/Over load/Over voltage
- Approvals:CE
- LED Showing the working state
- Cooling by free air convection
- 100% full load burn-in test
- 2-years warranty
- AC input voltage range: 85~264VAC;120~370VDC
- AC inrush current: Cold start,35A at 115VAC,70A at 230VAC
- DC adjustment range: ± 10%rated output voltage
- Over-load protection: 105~150% shutdown current, automatically resumed
- Over-voltage protection: 115%~135% rated output voltage
- Withstand voltage: I/P-O/P:3KVAC、I/P-FG:1.5KVAC、O/P-FG:0.5KVAC in 1 minute
- Working temperature: -20℃ ~+50℃
- Connection: I/P: 3 poles, O/P: Screw terminal(DIN type) with 3 poles
- Weight/Packing: 0.19kg, 72PCS/14.7kg/0.91CUFT

## 薄型导轨式开关电源

## Slim Design Single Output DIN-Rail Switching Power Supply



尺寸 Dimensions: 40 × 90 × 100mm

40 W 薄型导轨式 40W Slim Design Single Output DIN Rail Type

型号 Model Number	输出 Output	误差值 Tol	纹波和噪音 R&N	效率 Effi	功率 Power
IMDR-40-5	5V, 0~6.0A	± 2%	80mV	78%	30W
IMDR-40-12	12V, 0~3.33A	± 1%	120mV	86%	40W
IMDR-40-24	24V, 0~1.70A	± 1%	150mV	88%	40W
IMDR-40-48	48V, 0~0.83A	± 1%	200mV	88%	40W

## 产品规格

- AC 全范围输入
- 安装在横栏托架 TS35/7.5 或 15
- 保护：短路 / 过载 / 过压
- 认证：CE
- LED 显示工作状态
- 自冷散热
- 100% 满负荷烧机测试
- 2 年质量保证期
- AC 输入电压范围：85~264VAC;120~370VDC
- AC 冲击电流：冷起动,30A at 115VAC,60A at 230VAC
- DC 可调范围：0~+20% 的额定输出电压
- 过载保护：105~150% 关断电流，自动恢复
- 过压保护：120%~150% 额定输出电压
- 耐压性：I/P-O/P:3KVAC、I/P-FG:1.5KVAC、O/P-FG:0.5KVAC 在 1 分钟内
- 工作温度：-20℃ ~+60℃
- 连接：I/P:3 位 O/P:6 位螺丝端子
- 重量 / 包装：0.3Kg, 42PCS/13.6Kg/0.82CUFT

## SPECIFICATION

- Universal AC input/ Full range
- Installed on DIN rail TS35/7.5 or 15
- Protections: short circuit/Over load/Over voltage
- Approvals:CE
- LED Showing the working state
- Cooling by free air convection
- 100% full load burn-in test
- 2-years warranty
- AC input voltage range: 85~264VAC;120~370VDC
- AC inrush current: Cold start,30A at 115VAC,60A at 230VAC
- DC adjustment range: 0~+20%rated output voltage
- Over-load protection: 105~150% shutdown current, automatically resumed
- Over-voltage protection: 120%~150% rated output voltage
- Withstand voltage: I/P-O/P:3KVAC、I/P-FG:1.5KVAC、O/P-FG:0.5KVAC in 1 minute
- Working temperature: -20℃ ~+60℃
- Connection: I/P:3 poles, O/P: Screw terminal(DIN type) with 6 poles
- Weight/Packing: 0.3kg, 42PCS/13.6kg/0.82CUFT



尺寸 Dimensions: 40 × 90 × 100mm

60W 薄型导轨式 60W Slim Design Single Output DIN Rail Type

型号 Model Number	输出 Output	误差值 Tol	纹波和噪音 R&N	效率 Effi	功率 Power
IMDR-60-5	5V, 0~10.00A	± 2%	80mV	78%	50W
IMDR-60-12	12V, 0~5.00A	± 1%	120mV	86%	60W
IMDR-60-24	24V, 0~2.5A	± 1%	150mV	88%	60W
IMDR-60-48	48V, 0~12.5A	± 1%	200mV	87%	60W

## 产品规格

- AC 全范围输入
- 安装在横栏托架 TS35/7.5 或 15
- 保护：短路 / 过载 / 过压
- 认证：CE
- LED 显示工作状态
- 自冷散热
- 100% 满负荷烧机测试
- 2 年质量保证期
- AC 输入电压范围：85~264VAC;120~370VDC
- AC 冲击电流：冷起动,30A at 115VAC,60A at 230VAC
- DC 可调范围：0~+20% 的额定输出电压
- 过载保护：105~150% 关断电流，自动恢复
- 过压保护：120%~150% 额定输出电压
- 耐压性：I/P-O/P:3KVAC、I/P-FG:1.5KVAC、O/P-FG:0.5KVAC 在 1 分钟内
- 工作温度：-20℃ ~+55℃
- 连接：I/P:3 位 O/P:6 位螺丝端子
- 重量 / 包装：0.33kg, 42PCS/14.8kg/0.82CUFT

## SPECIFICATION

- Universal AC input/ Full range
- Installed on DIN rail TS35/7.5 or 15
- Protections: short circuit/Over load/Over voltage
- Approvals:CE
- LED Showing the working state
- Cooling by free air convection
- 100% full load burn-in test
- 2-years warranty
- AC input voltage range: 85~264VAC;120~370VDC
- AC inrush current: Cold start, 30A at 115VAC,60A at 230VAC
- DC adjustment range: 0~+20%rated output voltage
- Over-load protection: 105~150% shutdown current, automatically resumed
- Over-voltage protection: 120%~150% rated output voltage
- Withstand voltage: I/P-O/P:3KVAC、I/P-FG:1.5KVAC、O/P-FG:0.5KVAC in 1 minute
- Working temperature: -20℃ ~+55℃
- Connection: I/P:3 poles, O/P: Screw terminal(DIN type) with 6 poles
- Weight/Packing: 0.33kg, 42PCS/14.8kg/0.82CUFT

## 薄型导轨式开关电源

## Slim Design Single Output DIN-Rail Switching Power Supply



尺寸 Dimensions: 55 × 90 × 100mm

100W 薄型导轨式 100W Slim Design Single Output DIN Rail Type

型号 Model Number	输出 Output	误差值 Tol	纹波和噪音 R&N	效率 Effi	功率 Power
IMDR-100-12	12V, 0~7.5A	± 1%	120mV	85%	90W
IMDR-100-24	24V, 0~4A	± 1%	150mV	86%	96W
IMDR-100-48	48V, 0~2A	± 1%	200mV	88%	96W

## 产品规格

- AC 全范围输入
- 安装在横栏托架 TS35/7.5 或 15
- 保护：短路 / 过载 / 过压 / 过温
- 认证：CE
- LED 显示工作状态
- 自冷散热
- 100% 满负荷烧机测试
- 2 年质量保证期
- AC 输入电压范围：85~264VAC;120~370VDC
- AC 冲击电流：冷启动,30A at 115VAC,60A at 230VAC
- DC 可调范围：0~+20% 的额定输出电压
- 过载保护：105~150% 关断电流，自动恢复
- 过压保护：125%~150% 额定输出电压
- 耐压性：I/P-O/P:3KVAC、I/P-FG:1.5KVAC、O/P-FG:0.5KVAC 在 1 分钟内
- 工作温度：-20℃ ~+50℃
- 连接：I/P: 3 位 O/P:6 位螺丝端子
- 重量 / 包装：0.42kg, 30PCS/13.6kg/0.82CUFT

## SPECIFICATION

- Universal AC input/ Full range
- Installed on DINrail TS35/7.5 or 15
- Protections: Short circuit/Over load/Over voltage/Over temp
- Approvals:CE
- LED Showing the working state
- Cooling by free air convection
- 100% full load burn-in test
- 2-years warranty
- AC input voltage range: 85~264VAC;120~370VDC
- AC inrush current: Cold start,30A at 115VAC,60A at 230VAC
- DC adjustment range: 0~+20%rated output voltage
- Over-load protection: 105~150% shutdown current, automatically resumed
- Over-voltage protection: 125%~150% rated output voltage
- Withstand voltage: I/P-O/P:3KVAC、I/P-FG:1.5KVAC、O/P-FG:0.5KVAC in 1 minute
- Working temperature: -20℃ ~+50℃
- Connection: I/P:3 poles, O/P: Screw terminal(DIN type) with 6 poles
- Weight/Packing: 0.42kg, 30PCS/13.6kg/0.82CUFT



尺寸 Dimensions: 90 × 84 × 35mm  
30W 单组导轨式 30W Single Output Din Rail Type

型号 Model Number	输出 Output	误差 Tol	纹波 R&N	效率 Effi	功率 Power
NDR-30-5	5V,0 ~ 6A	1%	80mV	77%	30W
NDR-30-12	12V,0 ~ 2.5A	1%	120mV	83%	30W
NDR-30-15	15V,0 ~ 2A	1%	120mV	83%	30W
NDR-30-24	24V,0 ~ 1.25A	1%	200mV	85%	30W

### 产品规格

- 国际通用全范围交流输入
- 安装导轨 :TS-35/7.5 或 TS-35/15
- 保护种类 : 过电压 / 过载 / 短路
- 认证种类 :CE • LED 显示工作状态
- 自然风冷 • 100% 满载老化测试
- 2 年质量保质期
- 交流输入 AC85 ~ 264V/47 ~ 63HZ 或直流输入 DC120V ~ 370V
- 浪涌电流 : 冷机 20A @ 110VAC, 40A @ 220VAC
- 过载保护 : 额定输出功率的 105% ~ 150%
- 过压保护 : 额定输出电压的 115% ~ 135%
- 绝缘等级 :Class II I/P-O/P:AC 3KV
- 工作环境 : 温度 ; -20℃ ~ +60℃ ( 请参考减额曲线 ),
- 湿度 :20 ~ 90%RH 无冷凝
- 存储环境 : 温度 ; -40℃ ~ +85℃ , 湿度 ; 10 ~ 95%RH
- 平均无故障时间 (MTBF): ≥ 150000 小时 @25℃
- 连接 :I/P:2 位螺丝端子 , O/P:4 位螺丝端子
- 重量 / 包装 : 0.2Kg ,60PCS/18Kg/1.06CUFT

### SPECIFICATION

- International general full range AC input
- Installation Din Rail: TS-35/7, or TS-35/15
- Protection type: Over voltage/Over load/Short circuit
- Certification: CE
- LED working state Indicator
- Natural Air cooling
- 100% full load burn-in test
- 2 years warranty
- AC input: 85 ~ 264V/47 ~ 63HZ, or DC input: 120V ~ 370V
- Inrush current: Cold start, 20A @110VAC, 40A @ 220VAC
- Over-load protection: 105% ~ 150% of rated output power
- Over-voltage:115% ~ 135% of rated output power
- Insulation grade: Class II I/P-O/P: AC 3KV
- Working temperature:-20℃ ~ +60℃ (Please refer to the derating curve), Humidity: 20 ~ 90%RH Non-condensing
- Storage environment: -40℃ ~ +85℃ , Humidity: 10 ~ 95%RH
- MTBF ≥ 150000 hours @25℃
- Connection: I/P: screw terminals with 2 poles, O/P: screw terminals with 4 poles
- Weight/Pack: 0.2Kg, 60PCS/18Kg/1.06CUFT



尺寸 Dimensions: 90 × 84 × 35mm  
45W 单组导轨式 45W Single Output Din Rail Type

型号 Model Number	输出 Output	误差 Tol	纹波 R&N	效率 Effi	功率 Power
NDR-45-12	12V,0 ~ 4A	1%	80mV	84%	45W
NDR-45-15	15V,0 ~ 3A	1%	120mV	85%	45W
NDR-45-24	24V,0 ~ 2A	1%	120mV	87%	45W
NDR-45-48	48V,0 ~ 1A	1%	200mV	87%	45W

### 产品规格

- 国际通用全范围交流输入
- 安装导轨 :TS-35/7.5 或 TS-35/15
- 保护种类 : 过电压 / 过载 / 短路
- 认证种类 :CE • LED 显示工作状态
- 自然风冷 • 100% 满载老化测试
- 2 年质量保质期
- 交流输入 AC85 ~ 264V/47 ~ 63HZ 或直流输入 DC120V ~ 370V
- 浪涌电流 : 冷机 20A @ 110VAC, 40A @ 220VAC
- 过载保护 : 额定输出功率的 105% ~ 150%
- 过压保护 : 额定输出电压的 115% ~ 135%
- 绝缘等级 :Class II I/P-O/P:AC 3KV
- 工作环境 : 温度 ; -20℃ ~ +60℃ ( 请参考减额曲线 ),
- 湿度 :20 ~ 90%RH 无冷凝
- 存储环境 : 温度 ; -40℃ ~ +85℃ , 湿度 ; 10 ~ 95%RH
- 平均无故障时间 (MTBF): ≥ 150000 小时 @25℃
- 连接 :I/P:2 位螺丝端子 , O/P:4 位螺丝端子
- 重量 / 包装 : 0.2Kg ,60PCS/18Kg/1.06CUFT

### SPECIFICATION

- International general full range AC input
- Installation Din Rail: TS-35/7, or TS-35/15
- Protection type: Over voltage/Over load/Short circuit
- Certification: CE
- LED working state Indicator
- Natural Air cooling
- 100% full load burn-in test
- 2 years warranty
- AC input: 85 ~ 264V/47 ~ 63HZ, or DC input: 120V ~ 370V
- Inrush current: Cold start, 20A @110VAC, 40A @ 220VAC
- Over-load protection: 105% ~ 150% of rated output power
- Over-voltage:115% ~ 135% of rated output power
- Insulation grade: Class II I/P-O/P: AC 3KV
- Working temperature:-20℃ ~ +60℃ (Please refer to the derating curve), Humidity: 20 ~ 90%RH Non-condensing
- Storage environment: -40℃ ~ +85℃ , Humidity: 10 ~ 95%RH
- MTBF ≥ 150000 hours @25℃
- Connection: I/P: screw terminals with 2 poles, O/P: screw terminals with 4 poles
- Weight/Pack: 0.2Kg, 60PCS/18Kg/1.06CUFT

## 单组导轨式开关电源

## Single Group Din-Rail Switching Power Supply



尺寸 Dimensions: 90 × 84 × 35mm

60W 单组导轨式 60W Single Output Din Rail Type

型号 Model Number	输出 Output	误差 Tol	纹波 R&N	效率 Effi	功率 Power
NDR-60-12	12V,0 ~ 5A	1%	120mV	84%	60W
NDR-60-15	15V,0 ~ 4A	1%	120mV	85%	60W
NDR-60-24	24V,0 ~ 2.5A	1%	180mV	87%	60W
NDR-60-48	48V,0 ~ 1.25A	1%	200mV	87%	60W

## 产品规格

- 国际通用全范围交流输入
- 安装导轨: TS-35/7.5 或 TS-35/15
- 保护种类: 过电压 / 过载 / 短路
- 认证种类: CE • LED 显示工作状态
- 自然风冷 • 100% 满载老化测试
- 2 年质量保质期
- 交流输入 AC85 ~ 264V/47 ~ 63HZ 或直流输入 DC120V ~ 370V
- 浪涌电流: 冷机 20A @ 110VAC, 40A @ 220VAC
- 过载保护: 额定输出功率的 105% ~ 150%
- 过压保护: 额定输出电压的 115% ~ 135%
- 绝缘等级: Class II I/P-O/P: AC3KV
- 工作环境: 温度: -20°C ~ +60°C (请参考减额曲线),
- 湿度: 20 ~ 90%RH 无冷凝
- 存储环境: 温度: -40°C ~ +85°C, 湿度: 10 ~ 95%RH
- 平均无故障时间 (MTBF): ≥ 150000 小时 @25°C
- 连接: I/P: 2 位螺丝端子, O/P: 4 位螺丝端子
- 重量 / 包装: 0.2Kg, 60PCS/18Kg/1.06CUFT

## SPECIFICATION

- International general full range AC input
- Installation Din Rail: TS-35/7, or TS-35/15
- Protection type: Over voltage/Over load/Short circuit
- Certification: CE
- LED working state Indicator
- Natural Air cooling
- 100% full load burn-in test
- 2 years warranty
- AC input: 85 ~ 264V/47 ~ 63HZ, or DC input: 120V ~ 370V
- Inrush current: Cold start, 20A @ 110VAC, 40A @ 220VAC
- Over-load protection: 105% ~ 150% of rated output power
- Over-voltage: 115% ~ 135% of rated output power
- Insulation grade: Class II I/P-O/P: AC 3KV
- Working temperature: -20°C ~ +60°C (Please refer to the derating curve), Humidity: 20 ~ 90%RH Non-condensing
- Storage environment: -40°C ~ +85°C, Humidity: 10 ~ 95%RH
- MTBF ≥ 150000 hours @25°C
- Connection: I/P: screw terminals with 2 poles, O/P: screw terminals with 4 poles
- Weight/Pack: 0.2Kg, 60PCS/18Kg/1.06CUFT



尺寸 Dimensions: 90 × 84 × 35mm

75W 单组导轨式 75W Single Output Din Rail Type

型号 Model Number	输出 Output	误差 Tol	纹波 R&N	效率 Effi	功率 Power
NDR-75-12	12V,0 ~ 6.3A	1%	120mV	84%	75W
NDR-75-15	15V,0 ~ 5A	1%	120mV	85%	75W
NDR-75-24	24V,0 ~ 3.2A	1%	180mV	87%	75W
NDR-75-48	48V,0 ~ 1.6A	1%	200mV	87%	75W

## 产品规格

- 国际通用全范围交流输入
- 安装导轨: TS-35/7.5 或 TS-35/15
- 保护种类: 过电压 / 过载 / 短路
- 认证种类: CE • LED 显示工作状态
- 自然风冷 • 100% 满载老化测试
- 2 年质量保质期
- 交流输入 AC85 ~ 264V/47 ~ 63HZ 或直流输入 DC120V ~ 370V
- 浪涌电流: 冷机 20A @ 110VAC, 40A @ 220VAC
- 过载保护: 额定输出功率的 105% ~ 150%
- 过压保护: 额定输出电压的 115% ~ 135%
- 绝缘等级: Class II I/P-O/P: AC3KV
- 工作环境: 温度: -20°C ~ +60°C (请参考减额曲线),
- 湿度: 20 ~ 90%RH 无冷凝
- 存储环境: 温度: -40°C ~ +85°C, 湿度: 10 ~ 95%RH
- 平均无故障时间 (MTBF): ≥ 150000 小时 @25°C
- 连接: I/P: 2 位螺丝端子, O/P: 4 位螺丝端子
- 重量 / 包装: 0.47Kg, 36PCS/21Kg/2.3CUFT

## SPECIFICATION

- International general full range AC input
- Installation Din Rail: TS-35/7, or TS-35/15
- Protection type: Over voltage/Over load/Short circuit
- Certification: CE
- LED working state Indicator
- Natural Air cooling
- 100% full load burn-in test
- 2 years warranty
- AC input: 85 ~ 264V/47 ~ 63HZ, or DC input: 120V ~ 370V
- Inrush current: Cold start, 20A @ 110VAC, 40A @ 220VAC
- Over-load protection: 105% ~ 150% of rated output power
- Over-voltage: 115% ~ 135% of rated output power
- Insulation grade: Class II I/P-O/P: AC 3KV
- Working temperature: -20°C ~ +60°C (Please refer to the derating curve), Humidity: 20 ~ 90%RH Non-condensing
- Storage environment: -40°C ~ +85°C, Humidity: 10 ~ 95%RH
- MTBF ≥ 150000 hours @25°C
- Connection: I/P: screw terminals with 2 poles, O/P: screw terminals with 4 poles
- Weight/Pack: 0.47Kg, 36PCS/21Kg/2.3CUFT

## 单组导轨式开关电源

## Single Group Din-Rail Switching Power Supply



尺寸 Dimensions: 130 × 92 × 75mm

120W 单组导轨式 120W Single Output Din Rail Type

型号 Model Number	输出 Output	误差 Tol	纹波 R&N	效率 Effi	功率 Power
NDR-120-12	12V,0 ~ 10A	1%	120mV	84%	120W
NDR-120-15	15V,0 ~ 8A	1%	120mV	85%	120W
NDR-120-24	24V,0 ~ 5A	1%	180mV	87%	120W
NDR-120-48	48V,0 ~ 2.5A	1%	200mV	87%	120W

## 产品规格

- 国际通用全范围交流输入
- 安装导轨: TS-35/7.5 或 TS-35/15
- 保护种类: 过电压 / 过载 / 短路
- 认证种类: CE
- 自然风冷
- 2 年质量保质期
- 交流输入 AC85 ~ 264V/47 ~ 63HZ 或直流输入 DC120V ~ 370V
- 浪涌电流: 冷机 20A @ 110VAC, 40A @ 220VAC
- 过载保护: 额定输出功率的 105% ~ 150%
- 过压保护: 额定输出电压的 115% ~ 135%
- 绝缘等级: Class II I/P-O/P: AC3KV
- 工作环境: 温度: -20°C ~ +60°C (请参考减额曲线),
- 湿度: 20 ~ 90%RH 无冷凝
- 存储环境: 温度: -40°C ~ +85°C, 湿度: 10 ~ 95%RH
- 平均无故障时间 (MTBF): ≥ 150000 小时 @25°C
- 连接: I/P: 2 位螺丝端子, O/P: 4 位螺丝端子
- 重量 / 包装: 0.74Kg, 30PCS/24Kg/2.5CUFT

## SPECIFICATION

- International general full range AC input
- Installation Din Rail: TS-35/7, or TS-35/15
- Protection type: Over voltage/Over load/Short circuit
- Certification: CE
- LED working state Indicator
- Natural Air cooling
- 100% full load burn-in test
- 2 years warranty
- AC input: 85 ~ 264V/47 ~ 63HZ, or DC input: 120V ~ 370V
- Inrush current: Cold start, 20A @ 110VAC, 40A @ 220VAC
- Over-load protection: 105% ~ 150% of rated output power
- Over-voltage: 115% ~ 135% of rated output power
- Insulation grade: Class II I/P-O/P: AC 3KV
- Working temperature: -20°C ~ +60°C (Please refer to the derating curve), Humidity: 20 ~ 90%RH Non-condensing
- Storage environment: -40°C ~ +85°C, Humidity: 10 ~ 95%RH
- MTBF ≥ 150000 hours @25°C
- Connection: I/P: screw terminals with 2 poles, O/P: screw terminals with 4 poles
- Weight/Pack: 0.74Kg, 30PCS/24Kg/2.5CUFT

尺寸 Dimensions: 130 × 92 × 75mm

150W 单组导轨式 150W Single Output Din Rail Type

型号 Model Number	输出 Output	误差 Tol	纹波 R&N	效率 Effi	功率 Power
NDR-150-12	12V,0 ~ 12A	1%	120mV	84%	150W
NDR-150-15	15V,0 ~ 10A	1%	120mV	85%	150W
NDR-150-24	24V,0 ~ 6.2A	1%	180mV	87%	150W
NDR-150-48	48V,0 ~ 3.1A	1%	200mV	87%	150W

## 产品规格

- 国际通用全范围交流输入
- 安装导轨: TS-35/7.5 或 TS-35/15
- 保护种类: 过电压 / 过载 / 短路
- 认证种类: CE
- 自然风冷
- 2 年质量保质期
- 交流输入 AC85 ~ 264V/47 ~ 63HZ 或直流输入 DC120V ~ 370V
- 浪涌电流: 冷机 20A @ 110VAC, 40A @ 220VAC
- 过载保护: 额定输出功率的 105% ~ 150%
- 过压保护: 额定输出电压的 115% ~ 135%
- 绝缘等级: Class II I/P-O/P: AC3KV
- 工作环境: 温度: -20°C ~ +60°C (请参考减额曲线),
- 湿度: 20 ~ 90%RH 无冷凝
- 存储环境: 温度: -40°C ~ +85°C, 湿度: 10 ~ 95%RH
- 平均无故障时间 (MTBF): ≥ 150000 小时 @25°C
- 连接: I/P: 2 位螺丝端子, O/P: 4 位螺丝端子
- 重量 / 包装: 0.74Kg, 30PCS/24Kg/2.5CUFT

## SPECIFICATION

- International general full range AC input
- Installation Din Rail: TS-35/7, or TS-35/15
- Protection type: Over voltage/Over load/Short circuit
- Certification: CE
- LED working state Indicator
- Natural Air cooling
- 100% full load burn-in test
- 2 years warranty
- AC input: 85 ~ 264V/47 ~ 63HZ, or DC input: 120V ~ 370V
- Inrush current: Cold start, 20A @ 110VAC, 40A @ 220VAC
- Over-load protection: 105% ~ 150% of rated output power
- Over-voltage: 115% ~ 135% of rated output power
- Insulation grade: Class II I/P-O/P: AC 3KV
- Working temperature: -20°C ~ +60°C (Please refer to the derating curve), Humidity: 20 ~ 90%RH Non-condensing
- Storage environment: -40°C ~ +85°C, Humidity: 10 ~ 95%RH
- MTBF ≥ 150000 hours @25°C
- Connection: I/P: screw terminals with 2 poles, O/P: screw terminals with 4 poles
- Weight/Pack: 0.74Kg, 30PCS/24Kg/2.5CUFT



## 单组小型开关电源

## Single Output Miniature Switching Power Supply



## 产品规格

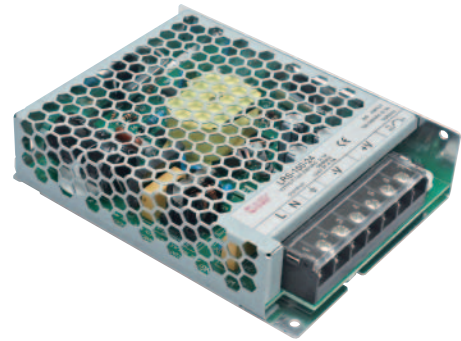
- 35w/50w 无负载功耗 < 0.2W; < 0.3W 为 75W/100W
- 通用交流输入 / 全系列
- 可承受 300VAC 浪涌输入 5 秒
- 超紧凑和 1U 低调
- 可承受 5G 振动测试
- 高操作温度高达 70°C
- 保护: 短路 / 过载 / 过电压
- 通过自由空气对流进行混淆
- 符合 IEC / EN60335-1 (PD3) 和 IEC / EN61558-1, -2-16 适用于家用电器
- 效率高, 寿命长, 可靠性高
- LED 指示灯, 用于开机
- 成本低
- 2 年保修
- No load power consumption <0.2W for 35W/50W; <0.3W for 75W/100W
- Universal AC input / Full range
- Withstand 300VAC surge input for 5 seconds
- Ultra compact and 1U low profile
- Withstand 5G vibration test
- High operationg temperature up to 70°C
- Protections:Short circuit / Overload / Over voltage
- Coonling by free air convection
- Compliance to IEC/EN60335-1(PD3) and IEC/EN61558-1, -2-16 for household appliances
- High efficiency, long life and high reliability
- LED indicator for power on
- Low cost
- 2 years warranty

## 技术参数

型号	LRS-35	LRS-50	LRS-75	LRS-100
交流输入电压范围	85~264VAC;120~370VDC			
交流浪涌电流(最大)	冷启动,45A at 230VAC		50A at 230VAC	50A at 230VAC
直流调节范围	± 10 % 通过电位器			
过载保护	范围	110%~150%		
	类型	Hiccup mode , auto-recovery		
过载电压保护	范围	额定输出电压 115 % ~135 %		
	类型	关闭 o/p 电压, 重新上电恢复		
耐压	I/P-O/P: 4kVAC, I/P-FG: 2kVAC, O / P-FG: 1.25kVAC, 1 分钟			
工作温度	-30~+70°C ( 参考输出降额曲线 )			
安全标准	UL62368-1, IEC/EN62368-1,IEC/EN61558-1,EN61558-2-16,IEC/EN60335-1,CCC GB4943,BSMI CNS14336-1,EAC TP TC 004, AS/NZS 60950.1 批准			
EMC 标准	EN55032 class B,EN55014,EN61000-3-2,3,EN61000-4,2,3,4,5,6,8,11,GB9254,CNS13438			
连接	5P/9.5mm 节点接线端子			
尺寸(L×W×H)	99 × 82 × 30		99 × 97 × 30	129 × 97 × 30

## 单组小型开关电源

## Single Output Miniature Switching Power Supply



## General Specification

Model No.	LRS-35	LRS-50	LRS-75	LRS-100
AC input voltage range	85~264VAC;120~370VDC			
AC inrush current (max.)	Cold start,45A at 230VAC		50A at 230VAC	50A at 230VAC
DC adjustment range	± 10% by potentiometer			
Overload protection	Range	110%~150%		
	Type	Hiccup mode , auto-recovery		
Overload voltage protection	Range	115%~135% rated output voltage		
	Type	Shut down o/p voltage , re-power on to recover		
Withstand voltage	I/P-O/P:4kVAC,I/P-FG:2kVAC,O/P-FG:1.25kVAC,1 minute			
Working temperature	-30~+70℃ (refer to output derating curve)			
Safety standards	UL62368-1, IEC/EN62368-1,IEC/EN61558-1,EN61558-2-16,IEC/EN60335-1,CCC GB4943,BSMI CNS14336-1, EAC TP TC 004,AS/NZS 60950.1 approved			
EMC standards	EN55032 class B,EN55014,EN61000-3-2,3,EN61000-4,2,3,4,5,6,8,11,GB9254,CNS13438			
Connection	5P/9.5mm pitch terminal block			
Dimension(L x W x H)	99 x 82 x 30		99 x 97 x 30	129 x 97 x 30

## LRS-35 系列 Series

型号 Model	输出 Output	Tol.	R&N	Effi.
LRS-35-5	5V,0~7A	± 2%	80mV	82.0%
LRS-35-12	12V,0~3A	± 1%	120mV	86.0%
LRS-35-15	15V,0~2.4A	± 1%	120mV	86.0%
LRS-35-24	24V,0~1.5A	± 1%	150mV	88.0%
LRS-35-36	36V,0~1A	± 1%	200mV	88.0%
LRS-35-48	48V,0~0.8A	± 1%	200mV	89.0%

## LRS-75 系列 Series

型号 Model	输出 Output	Tol.	R&N	Effi.
LRS-75-5	5V,0~14A	± 2%	100mV	86.0%
LRS-75-12	12V,0~6A	± 1%	120mV	89.0%
LRS-75-15	15V,0~5A	± 1%	120mV	89.0%
LRS-75-24	24V,0~3.2A	± 1%	150mV	90.0%
LRS-75-36	36V,0~2.1A	± 1%	200mV	91.5%
LRS-75-48	48V,0~1.6A	± 1%	200mV	91.5%

## LRS-50 系列 Series

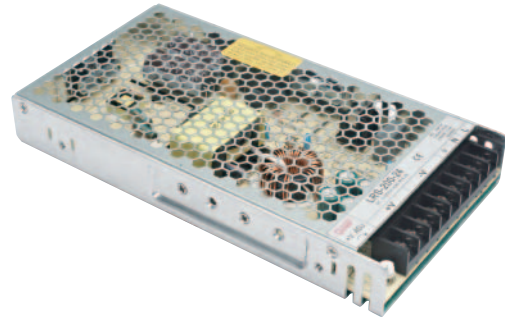
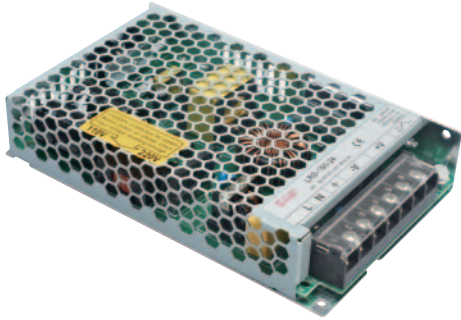
型号 Model	输出 Output	Tol.	R&N	Effi.
LRS-50-3.3	3.3V,0~10A	± 3%	80mV	80.0%
LRS-50-5	5V,0~10A	± 2%	80mV	83.0%
LRS-50-12	12V,0~4.2A	± 1%	120mV	86.0%
LRS-50-15	15V,0~3.4A	± 1%	120mV	88.0%
LRS-50-24	24V,0~5.5A	± 1%	150mV	88.0%
LRS-50-36	36V,0~1.45A	± 1%	200mV	89.0%
LRS-50-48	48V,0~1.1A	± 1%	200mV	90.0%

## LRS-100 系列 Series

型号 Model	输出 Output	Tol.	R&N	Effi.
LRS-100-3.3	3.3V,0~20A	± 3%	80mV	84.0%
LRS-100-5	5V,0~18A	± 2%	80mV	86.0%
LRS-100-12	12V,0~8.5A	± 1%	120mV	88.0%
LRS-100-15	15V,0~7A	± 1%	120mV	88.5%
LRS-100-24	24V,0~4.5A	± 1%	150mV	90.0%
LRS-100-36	36V,0~2.8A	± 1%	200mV	90.5%
LRS-100-48	48V,0~2.3A	± 1%	200mV	91.0%

## 单组小型开关电源

## Single Output Miniature Switching Power Supply



## 产品规格

- 150W 无负载功耗 <0.5W;
- 交流输入可通过开关选择 (LRS-1450F 通用交流输入 / 全范围)
- 承受 300VAC 浪涌输入 5 秒
- 超紧凑, 1U 薄型
- 承受 5G 振动测试
- 高温运行温度可达 70°C
- 保护: 短路 / 过载 / 过压 / 过温。
- 自由空气对流 (150W / 200W);  
通过直流风扇强制空气冷却 (350W)
- 符合 IEC / EN60335-1 (PD3) 和 IEC / EN61558-1,  
-2-16 适用于家用电器 (150W)
- LED 指示灯, 用于开机
- 效率高, 寿命长, 可靠性高
- 成本低
- 2 年保修

## Features

- No load power consumption <0.5W for 150W;
- AC input selectable by switch (LRS-1450F Universal AC input / Full range)
- Withstand 300VAC surge input for 5 seconds
- Ultra compact and 1U low profile
- Withstand 5G vibration test
- High operating temperature up to 70°C
- Protections: Short circuit / Overload / Over voltage/Over temp.
- Cooling by free air convection (150W/200W);  
forced air cooling by built-in DC fan (350W)
- Compliance to IEC/EN60335-1(PD3) and IEC/EN61558-1,  
-2-16 for household appliances (150W)
- LED indicator for power on
- High efficiency, long life and high reliability
- Low cost
- 2 years warranty

## 技术参数

型号	LRS-150F	LRS-150	LRS-200	LRS-350
交流输入电压范围	85~264VAC;120~370VDC	115/230VAC by switch		
交流浪涌电流 (最大)	冷启动, 60A at 230 VAC			
直流调节范围	± 10% 通过电位器			
过载保护	范围	110%~140%		
	类型	Hiccup mode, auto-recovery		
过载电压保护	范围	115%~145% 额定输出电压		
	类型	关闭电压, 重新通电恢复		
耐压	I/P-O/P:4kVAC,I/P-FG:2kVAC,O/P-FG:1.25kVAC		I/P-O/P:3kVAC,I/P-FG:2kVAC,O/P-FG:0.5kVAC	
工作温度	-30~+70°C (输出降额曲线)		-25~+70°C (输出降额曲线)	
安全标准	UL62368-1, IEC/EN62368-1, IEC/EN61558-1, EN61558-2-16, IEC/EN60335-1, CCC GB4943, BSMI CNS14336-1, EAC TP TC 004, AS/NZS 60950.1 approved		UL62368-1, BSMI CNS14336-1, EAC TP TC 004 approved	
EMC 标准	EN55032 class B, EN55014, EN61000-3-2(120W), 3, EN61000-4-2, 3, 4, 5, 6, 8, 11, GB/T 9254, EAC TP TC 020, BSML CNS13438		EAC TP TC 020, BSML CNS13438, Design refer to EN55032 class A	
连接	7P/9.5mm 螺距端子块		9P/9.5mm pitch terminal block	
尺寸 (L × W × H)	159 × 97 × 30		215 × 115 × 30	



## General Specification

Model No.	LRS-150F	LRS-150	LRS-200	LRS-350
AC input voltage range	85~264VAC;120~370VDC		115/230VAC by switch	
AC inrush current (max.)	Cold start,60A at 230 VAC			
DC adjustment range	± 10% by potentiometer			
Overload protection	Range	110%~140%		
	Type	Hiccup mode , auto-recovery		
Overload voltage protection	Range	115%~145% rated output voltage		
	Type	Shut down o/p voltage , re-power on to recover		
Withstand voltage	I/P-O/P:4kVAC,I/P-FG:2kVAC,O/P-FG:1.25kVAC		I/P-O/P:3kVAC,I/P-FG:2kVAC,O/P-FG:0.5kVAC	
Working temperature	-30~+70°C (refer to output derating curve)		-25~+70°C (refer to output derating curve)	
Safety standards	UL62368-1, IEC/EN62368-1,IEC/EN61558-1, EN61558-2-16,IEC/EN60335-1,CCC GB4943,BSMI CNS14336-1,EAC TP TC 004,AS/NZS 60950.1 approved		UL62368-1,BSMI CNS14336-1, EAC TP TC 004 approved	
EMC standards	EN55032 class B,EN55014,EN61000-3-2(120W),3, EN61000-4-2,3,4,5,6,8,11, GB/T 9254,EAC TP TC 020,BSML CNS13438		EAC TP TC 020,BSML CNS13438, Design refer to EN55032 class A	
Connection	7P/9.5mm pitch terminal block		9P/9.5mm pitch terminal block	
Dimension(L x W x H)	159 x 97 x 30		215 x 115 x 30	

## LRS-150 系列 Series

型号 Model	输出 Output	Tol.	R&N	Effi.
LRS-150-12	12V,0~12.5A	± 1%	150mV	87.5%
LRS-150-15	15V,0~10A	± 1%	150mV	88.5%
LRS-150-24	24V,0~6.5A	± 1%	200mV	89.0%
LRS-150-36	36V,0~4.3A	± 1%	200mV	89.0%
LRS-150-48	48V,0~3.3A	± 1%	200mV	90.0%

## LRS-150F 系列 Series

型号 Model	输出 Output	Tol.	R&N	Effi.
LRS-150F-5	5V,0~22A	± 2%	100mV	85.0%
LRS-150F-12	12V,0~12.5A	± 1%	150mV	87.5%
LRS-150F-15	15V,0~10A	± 1%	150mV	89.0%
LRS-150F-24	24V,0~6.5A	± 1%	200mV	89.0%
LRS-150F-36	36V,0~4.3A	± 1%	200mV	89.0%
LRS-150F-48	48V,0~3.3A	± 1%	200mV	90.0%

## LRS-200 系列 Series

型号 Model	输出 Output	Tol.	R&N	Effi.
LRS-200-3.3	3.3V,0~40A	± 3%	150mV	83.0%
LRS-200-4.2	4.2V,0~40A	± 4%	150mV	86.0%
LRS-200-5	5V,0~40A	± 3%	150mV	87.0%
LRS-200-12	12V,0~17A	± 1.5%	150mV	87.5%
LRS-200-15	15V,0~14A	± 1%	150mV	88.0%
LRS-200-24	24V,0~8.8A	± 1%	150mV	89.5%
LRS-200-36	36V,0~5.9A	± 1%	200mV	89.5%
LRS-200-48	48V,0~4.4A	± 1%	200mV	90.0%

## LRS-350 系列 Series

型号 Model	输出 Output	Tol.	R&N	Effi.
LRS-350-3.3	3.3V,0~60A	± 4%	150mV	79.5%
LRS-350-4.2	4.2V,0~60A	± 4%	150mV	81.5%
LRS-350-5	5V,0~60A	± 3%	150mV	83.5%
LRS-350-12	12V,0~29A	± 1.5%	150mV	85.0%
LRS-350-15	15V,0~23.2A	± 1%	150mV	86.0%
LRS-350-24	24V,0~14.6A	± 1%	150mV	88.0%
LRS-350-36	36V,0~9.7A	± 1%	200mV	88.5%
LRS-350-48	48V,0~7.3A	± 1%	200mV	89.0%