

★ 因产品开发及技术改进等原因，实际销售产品可能与本手册中展示的有所不同，本公司保留相关权利。产品若有改动，恕不另行通知。
Our company will reserve relevant rights about changes of the manual due to development of products and technical improvements.



上海本焜 (xuān) 电气科技有限公司
SHANGHAI NATURE BEYOND ELECTRIC TECHNOLOGY CO.,LTD.

地址：上海市闵行区新龙路 1333 弄 108 号 (万科·虹桥云)
电话：021-6658 1687 021-5308 1687
手机：139 1682 4787 传真：021-5308 2129
E-mail: qwifm@qwifm.com
Http://www.qwifm.com

Address: No. 108th, Lane 1333, Xinlong Road,
Minhang, Shanghai (Vanke Hongqiao Cloud)
Tel: 0086-21-6610 1687 0086-21-5308 1687
Mobile: 0086-139 1682 4787 Fax: 0086-21-5308 2129
E-mail: qwifm@qwifm.com Http://www.qwdhc.com





智能固态继电器

Intelligent Solid State Relay



体积小，外形精致 Small size, exquisite shape

具有自动热平衡功能 It has the function of automatic heat balance

自动感知外部环境的工作状态 It can automatically sense the working state of external environment

探索世界的峰 只因从不满足已知的大地

Explore the peak of the world
Because it never satisfies the known earth

/ 我们一直在路上 /
We've been on our way..... /

Brief Introduction

企业简介

上海本煜电气科技有限公司其前身是一家集设计开发、生产、销售于一体的专业的自动化元件的制造商。我公司拥有独立的研发部门，专业的生产团队，并吸取众家之长，所设计的产品在品质、外观均可与任何厂家媲美。

我们的产品涵盖电感接近传感器、电容式接近传感器、霍尔传感器、光电传感器、固态继电器、固态调压器、开关电源及编码器。我们一直致力于通过不断研发和质量管理，以高品质和多种类的产品及优质的服务来满足用户的需要。

公司以完善的组织架构和技术实力，保证了生产效率，以高度的灵活性为客户提供优质的服务，大部分产品通过欧共体CE认证，并始终贯彻执行“今天的质量，明天的市场”的质量方针，使企业得到了飞速的发展。

qwifm 在中国已被业界公认为固态继电器行业的领导品牌，并日益成为全球工控领域的知名品牌。

Shanghai Nature Beyond Electric Technology Co.,LTD. is a professional manufacturer of automation components integrating design, development, production and sales. Our company has an independent R & D department, professional production team, and learn from the strengths of others, the quality and appearance of the products designed can be comparable with any manufacturer.

Our products include inductive proximity sensor, capacitive proximity sensor, Hall sensor, photoelectric sensor, solid state relay, solid state voltage regulator, switching power supply and encoder. We have been committed to meet the needs of users through continuous R&D and quality management, with high quality and variety of products and quality services.

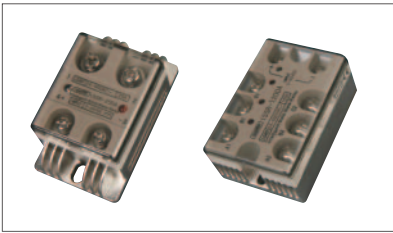
With perfect organizational structure and technical strength, the company guarantees production efficiency and provides customers with high-quality service with high flexibility. Most of the products have passed the CE certification of the European Community and have always implemented the "Today's Quality, Tomorrow's Market". The quality policy has enabled the company to develop rapidly.

QWIFM has been known as the leading brand in China's solid state relay field, and increasingly becoming one of the famous brands in the world.

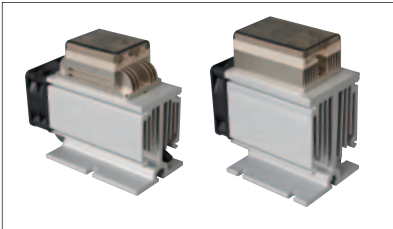
Catalog

目录

智能固态继电器



- 01 智能固态继电器简介
- 03 ISSR 系列智能单相直流控制交流固态继电器 DC/AC
- 05 ISSR 系列智能单相交流控制交流固态继电器 AC/AC
- 07 ISSR 系列智能单相交流阻控式调压器
- 09 ITR 系列智能三相直流控制交流固态继电器
- 10 ITR 系列智能三相交流控制交流固态继电器
- 11 ISSR/ITR 系列散热器一体型
- 17 散热器 风机型
- 18 注意事项 - 安装说明



Intelligent solid state relay

- 01 Intelligent Solid State Relay
- 03 ISSR Intelligent SSR-Single Phase- DC/AC
- 05 ISSR Intelligent SSR-Single Phase- AC/AC
- 07 ISSR Intelligent Voltage Regulator-Single Phase-Resistive Type-AC
- 09 ITR Intelligent three phase DC controlled AC solid state relay
- 10 Intelligent three phase AC control AC solid state relay
- 11 ISSR/ITR Radiator integration
- 17 Radiator Fan type
- 18 Matters needing attention / Installation instructions

智能固态继电器简介

Intelligent Solid State Relay Brief Introduction

智能固态继电器的基本概念

智能固态继电器是指固态继电器本体能够对所工作的客观条件进行电流，电压，温度合理的感应分析，判断及有效快捷反应和有效的处理，并具备充分保护固态继电器本体和负载的安全，高可靠运行的综合能力。

BASIC CONCEPT OF INTELLIGENT SOLID STATE RELAY

Intelligent Solid State Relay refers to that the solid state relay itself can make reasonable induction analysis, judgment and effective, quick response and effective treatment on current, voltage and temperature for the objective conditions, full protection solid relay body and the load security, as well as comprehensive ability to operate with high reliability.

智能固态继电器的特性

- 智能固态继电器具有超小体积，金属铝合金外壳，精致美观，并与目前通用的电子式固态继电器安装位置相同，可直接替换。
- 智能固态继电器具有自动感知设备工作状态，如负载产生泄露而增加了工作电流，产生局部短路现象或散热条件不足而导致固态继电器本体温度急速上升产生极度过热现象。
此现象发生时，智能固态继电器内部智能微型功率控制芯片的温度控制自动减少对功率器件的导通电流，实现热平衡工作，以确保安全稳定工作。
- 智能固态继电器具有超宽控制电压，其输入端仅要求很小的控制电压就可启动开关，与计算机，单片机等集成电路具有优良的兼容性。
- 智能固态继电器采用先进的软启动工作模式，具有极强抗电流冲击能力。
- 智能固态继电器隔离耐压达 5000V，极大的提高安全性，延长使用寿命。

CHARACTERISTICS OF INTELLIGENT SOLID STATE RELAY

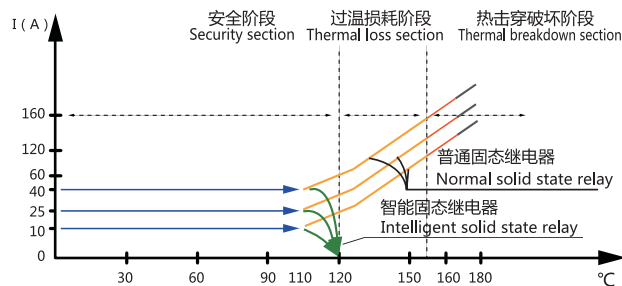
- Intelligent solid state relay has ultra small volume, metal aluminum alloy shell, exquisite and beautiful appearance, and same installation site with current general electronic solid state relay, as well as direct replacement.
- Intelligent solid state relay can perform automatic sensing on device working state. for example, the load causes leakage and increases the operating current, local short-circuit phenomenon or insufficient heat dissipation condition causing the temperature of the solid relay body rise rapidly, and extreme super heating phenomenon. When the phenomenon occurs, the temperature control of the intelligent micro power control chip of the intelligent solid state relay can automatically reduce the turn-on current of the power device and achieve the thermal balance work, so as to ensure the safety and stability.
- Intelligent solid state relay has ultra wide control voltage, the switch can be started only when the input voltage is very small, meanwhile, it has good compatibility with computer, SCM and other integrated circuits.
- Intelligent solid state relay adopts advanced soft start mode, and has strong anti current impact capability.
- Isolation withstand voltage of intelligent solid state relay is up to 5000V, which can greatly improve safety and prolong service life.

智能固态继电器简介

Intelligent Solid State Relay Brief Introduction

温度比较表 (温度热保护)

TEMPERATURE COMPARISON TABLE (TABLE1 TEMPERATURE THERMAL PROTECTION)



智能固态继电器和普通固态继电器温度工作对比
Working status comparison between Intelligent solid state relay and original solid state relay

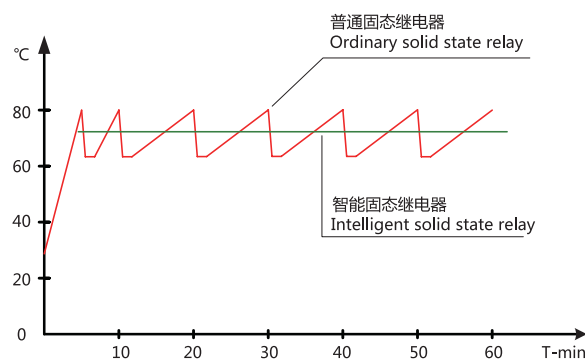
绿线代表智能固态继电器

The green line represents the intelligent solid state relay

- 在 110 度以上自动调节负载电流，降低输出功率达到热平衡，所以不可能存在过温和热击穿现象，寿命明显增加。
- 下次重复使用，智能固态继电器电性能自动恢复，而普通固态继电器超过 110 度后再使用就不能恢复正常工作。
- Adjust the load current automatically when temperature achieve more than 110 degree centigrade, Reduce power output to reach thermal equilibrium, so there is no moderate thermal breakdown, service life can be increased.
- When reused next time, intelligent solid state relay's electrical property can recover automatically, while the ordinary solid state relay can't be resume normal work after the temperature is more than 110 degree centigrade.

壳内温度热平衡 – 整机环境温度智能平衡

TABLE2: HEAT BALANCE INSIDE OF THE SHELL- INTELLIGENT BALANCE OF THE ENVIRONMENTAL TEMPERATURE

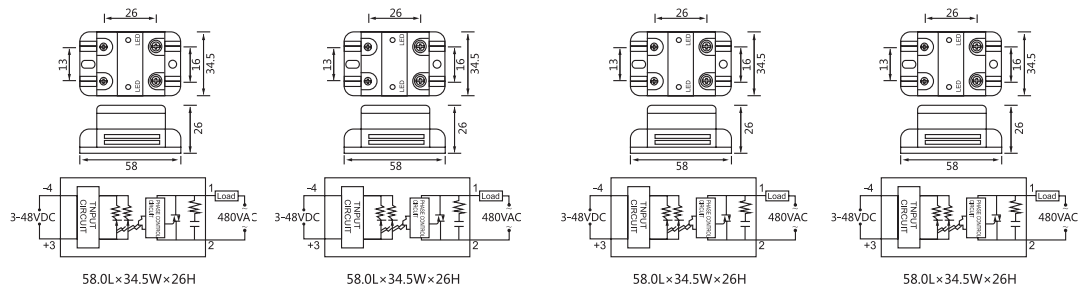


智能固态继电器和普通固态继电器温度工作对比
Working status comparison between Intelligent solid state relay and original solid state relay

- 普通固态继电器加温控开关在工作时，会在产生过温保护时自动关断电源，引起输出电源的间断性工作。
- 智能固态继电器工作时，在产生过温时会有一个自动热平衡功能，确保连续工作。
- When Ordinary solid state relay and temperature control switch is working, it produce over temperature protection and turn off the power supply automatically, will cause the intermittent work of output power.
- When the I-SSR works, will have the thermal equilibrium function while produce over temperature to ensure continous work.



产品型号 Model	ISSR-10DA	ISSR-15DA	ISSR-25DA	ISSR-40DA
负载电流 Load Current	10A	15A	25A	40A
负载电压 Load Voltage	24-480VAC	24-480VAC	24-480VAC	24-480VAC
控制电压 Control Voltage	3-48VDC	3-48VDC	3-48VDC	3-48VDC
控制电流 Control Current	3-20mA	3-20mA	3-20mA	3-20mA
通态压降 On Voltage	≤ 1.5VAC	≤ 1.5VAC	≤ 1.5VAC	≤ 1.5VAC
断态漏电流 Off-state Leakage Current	≤ 4mA	≤ 4mA	≤ 4mA	≤ 4mA
通断时间 Time Off	≤ 10ms	≤ 10ms	≤ 10ms	≤ 10ms
介质耐压 Dielectric Strength	2500VAC	2500VAC	2500VAC	2500VAC
绝缘电阻 Insulation Resistance	100MΩ/500VDC	100MΩ/500VDC	100MΩ/500VDC	100MΩ/500VDC
环境温度 Ambient Temperature	-25~+75℃	-25~+75℃	-25~+75℃	-25~+75℃
安置方式 Mounting Methods	M4 螺栓固定 M4 Bolted fixed	M4 螺栓固定 M4 Bolted fixed	M4 螺栓固定 M4 Bolted fixed	M4 螺栓固定 M4 Bolted fixed
工作指示 The work instructions	双 LED: (绿色: 工作; 红色: 故障) Double LED: (Green:Work;RED:The fault)	双 LED: (绿色: 工作; 红色: 故障) Double LED: (Green:Work;RED:The fault)	双 LED: (绿色: 工作; 红色: 故障) Double LED: (Green:Work;RED:The fault)	双 LED: (绿色: 工作; 红色: 故障) Double LED: (Green:Work;RED:The fault)
重量 Weight	50g	50g	50g	50g

外形尺寸
Overall dimensions

说明: 1、负载 10A, 必须装散热器, 40A 以上加风扇强冷或水冷。

2、使用感性负载时, 请务必在输出端并接一压敏电阻, 取值为负载电压的 1.6-1.9 倍。

Instruction: 1、load current 10A, should install radiator, upwards 40A should add fan for force cooling or water cooling.

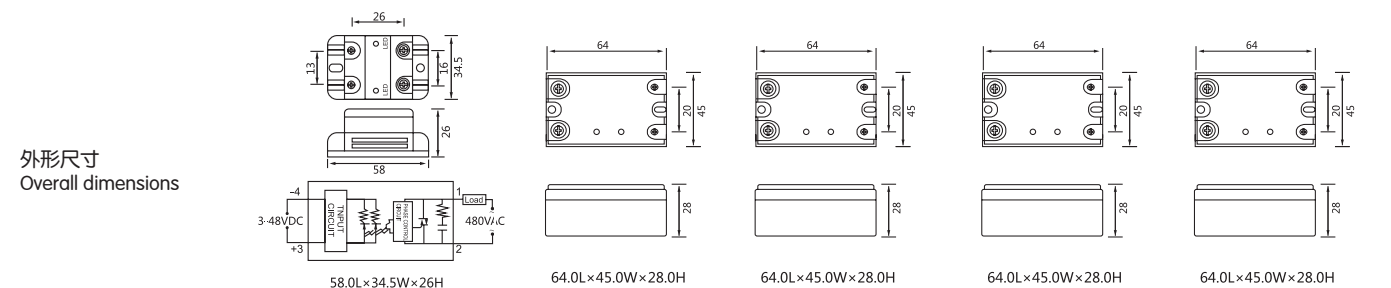
2、When using Inductive load, please add a varistor at the output side, the value is 1.6-1.9 multiple of load voltage.

智能单相直流控制交流固态继电器 DC/AC

Intelligent SSR—Single Phase— DC/AC



产品型号 Model	ISSR-60DA	ISSR-80DA	ISSR-90DA	ISSR-100DA	ISSR-120DA
负载电流 Load Current	60A	80A	90A	100A	120A
负载电压 Load Voltage	24-480VAC	24-480VAC	24-480VAC	24-480VAC	24-480VAC
控制电压 Control Voltage	3-48VDC	3-48VDC	3-48VDC	3-48VDC	3-48VDC
控制电流 Control Current	3-20mADC	3-20mADC	3-20mADC	3-20mADC	3-20mADC
通态压降 On Voltage	≤ 1.5VAC	≤ 1.5VAC	≤ 1.5VAC	≤ 1.5VAC	≤ 1.5VAC
断态漏电流 Off-state Leakage Current	≤ 4mA	≤ 4mA	≤ 4mA	≤ 4mA	≤ 4mA
通断时间 Time Off	≤ 10ms	≤ 10ms	≤ 10ms	≤ 10ms	≤ 10ms
介质耐压 Dielectric Strength	2500VAC	2500VAC	2500VAC	2500VAC	2500VAC
绝缘电阻 Insulation Resistance	100MΩ/500VDC	100MΩ/500VDC	100MΩ/500VDC	100MΩ/500VDC	100MΩ/500VDC
环境温度 Ambient Temperature	-25~+75℃	-25~+75℃	-25~+75℃	-25~+75℃	-25~+75℃
安置方式 Mounting Methods	M4 螺栓固定 M4 Bolted fixed	M4 螺栓固定 M4 Bolted fixed	M4 螺栓固定 M4 Bolted fixed	M4 螺栓固定 M4 Bolted fixed	M4 螺栓固定 M4 Bolted fixed
工作指示 The work instructions	双 LED: (绿色:工作 红色:故障) (绿色:工作 红色:故障) (绿色:工作 红色:故障) Double LED: Double LED: Double LED: (Green:Work;RED:The fault) (Green:Work;RED:The fault) (Green:Work;RED:The fault)				
重量 Weight	65g	135g	135g	135g	135g



说明: 1、负载 10A, 必须装散热器, 40A 以上加风扇强冷或水冷。

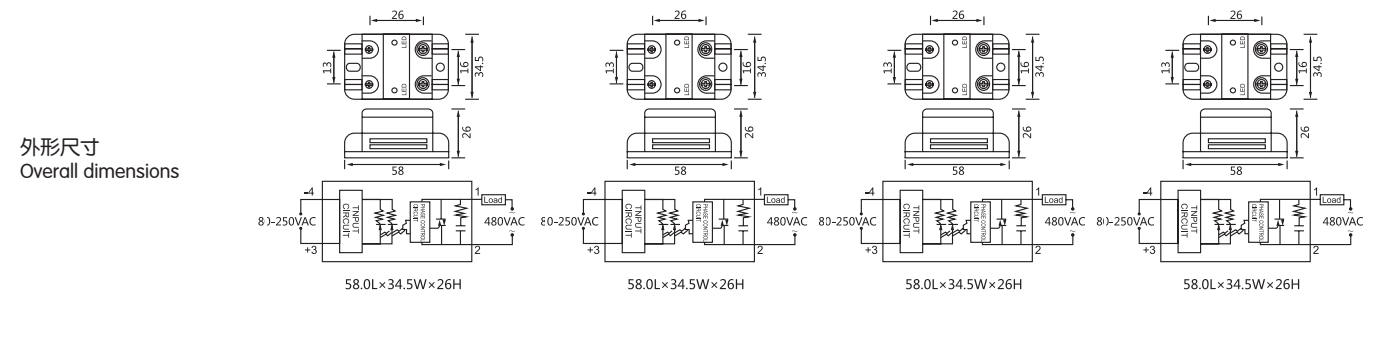
2、使用感性负载时, 请务必在输出端并接一压敏电阻, 取值为负载电压的 1.6-1.9 倍。

Instruction: 1、load current 10A, should install radiator, upwards 40A should add fan for force cooling or water cooling.

2、When using Inductive load, please add a varistor at the output side, the value is 1.6-1.9 multiple of load voltage.



产品型号 Model	ISSR-10AA	ISSR-25AA	ISSR-40AA	ISSR-50AA
负载电流 Load Current	10A	25A	40A	50A
负载电压 Load Voltage	24-480VAC	24-480VAC	24-480VAC	24-480VAC
控制电压 Control Voltage	80-250VAC	80-250VAC	80-250VAC	80-250VAC
控制电流 Control Current	3-10mAAC	3-10mAAC	3-10mAAC	3-10mAAC
通态压降 On Voltage	≤ 1.5VAC	≤ 1.5VAC	≤ 1.5VAC	≤ 1.5VAC
断态漏电流 Off-state Leakage Current	≤ 4mA	≤ 4mA	≤ 4mA	≤ 4mA
通断时间 Time Off	≤ 10ms	≤ 10ms	≤ 10ms	≤ 10ms
介质耐压 Dielectric Strength	2500VAC	2500VAC	2500VAC	2500VAC
绝缘电阻 Insulation Resistance	100MΩ/500VDC	100MΩ/500VDC	100MΩ/500VDC	100MΩ/500VDC
环境温度 Ambient Temperature	-25~+75℃	-25~+75℃	-25~+75℃	-25~+75℃
安置方式 Mounting Methods	M4 螺栓固定 M4 Bolted fixed	M4 螺栓固定 M4 Bolted fixed	M4 螺栓固定 M4 Bolted fixed	M4 螺栓固定 M4 Bolted fixed
工作指示 The work instructions	双 LED: (绿色: 工作; 红色: 故障) Double LED: (Green:Work;RED:The fault)	LED	LED	LED
重量 Weight	70g	70g	70g	70g

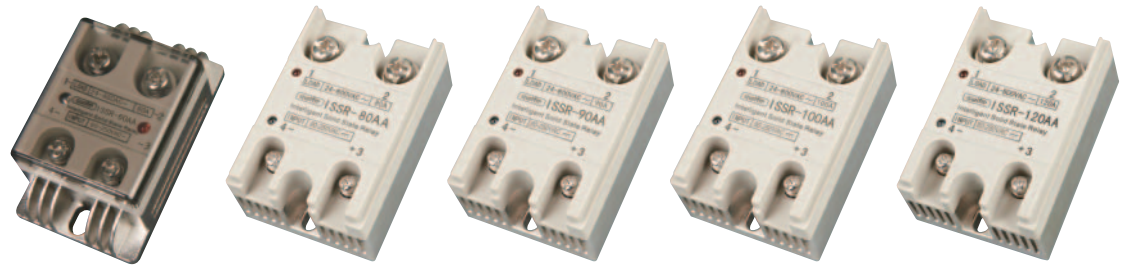


说明: 1、负载 10A, 必须装散热器, 40A 以上加风扇强冷或水冷。
2、使用感性负载时, 请务必在输出端并接一压敏电阻, 取值为负载电压的 1.6-1.9 倍。

Instruction: 1、load current 10A, should install radiator, upwards 40A should add fan for force cooling or water cooling.
2、When using Inductive load, please add a varistor at the output side, the value is 1.6-1.9 multiple of load voltage.

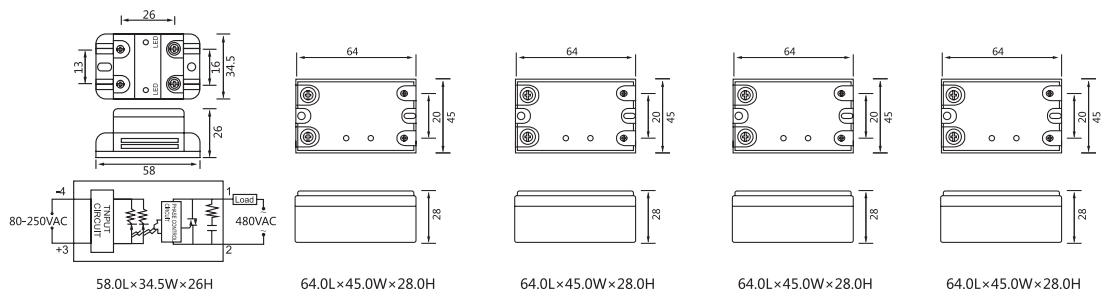
智能单相交流控制交流固态继电器 AC/AC

Intelligent SSR-Single Phase- AC/AC



产品型号 Model	ISSR-60AA	ISSR-80AA	ISSR-90AA	ISSR-100AA	ISSR-120AA
负载电流 Load Current	60A	80A	90A	100A	120A
负载电压 Load Voltage	24-480VAC	24-480VAC	24-480VAC	24-480VAC	24-480VAC
控制电压 Control Voltage	80-250VAC	80-250VAC	80-250VAC	80-250VAC	80-250VAC
控制电流 Control Current	3-10mAAC	3-10mAAC	3-10mAAC	3-10mAAC	3-10mAAC
通态压降 On Voltage	≤ 1.5VAC	≤ 1.5VAC	≤ 1.5VAC	≤ 1.5VAC	≤ 1.5VAC
断态漏电流 Off-state Leakage Current	≤ 4mA	≤ 4mA	≤ 4mA	≤ 4mA	≤ 4mA
通断时间 Time Off	≤ 10ms	≤ 10ms	≤ 10ms	≤ 10ms	≤ 10ms
介质耐压 Dielectric Strength	2500VAC	2500VAC	2500VAC	2500VAC	2500VAC
绝缘电阻 Insulation Resistance	100MΩ/500VDC	100MΩ/500VDC	100MΩ/500VDC	100MΩ/500VDC	100MΩ/500VDC
环境温度 Ambient Temperature	-25~+75℃	-25~+75℃	-25~+75℃	-25~+75℃	-25~+75℃
安置方式 Mounting Methods	M4 螺栓固定 M4 Bolted fixed	M4 螺栓固定 M4 Bolted fixed	M4 螺栓固定 M4 Bolted fixed	M4 螺栓固定 M4 Bolted fixed	M4 螺栓固定 M4 Bolted fixed
工作指示 The work instructions	LED	LED	LED	LED	LED
重量 Weight	70g	135g	135g	135g	135g

外形尺寸 Overall dimensions



说明: 1、负载 10A, 必须装散热器, 40A 以上加风扇强冷或水冷。
2、使用感性负载时, 请务必在输出端并接一压敏电阻, 取值为负载电压的 1.6-1.9 倍。

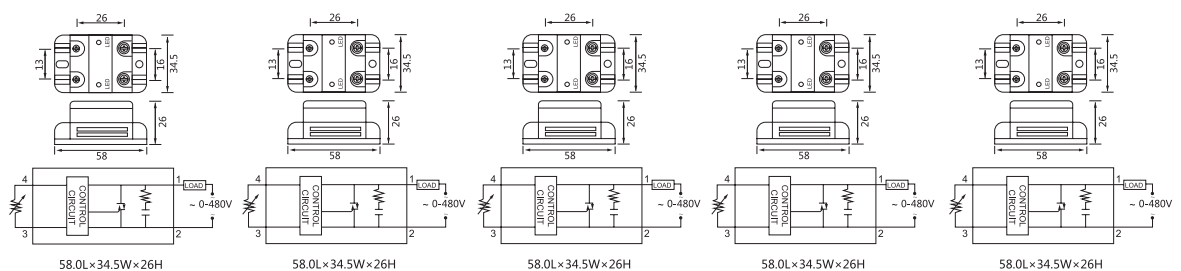
Instruction: 1、load current 10A, should install radiator, upwards 40A should add fan for force cooling or water cooling.
2、When using Inductive load, please add a varistor at the output side, the value is 1.6-1.9 multiple of load voltage.

智能单相交流阻控式调压器

Intelligent Voltage Regulator—Single Phase—Resistive Type—AC



产品型号 Model	ISSR-10RA	ISSR-25RA	ISSR-40RA	ISSR-50RA	ISSR-60RA
负载电流 Load Current	10A	25A	40A	50A	60A
负载电压 Load Voltage	(电阻型调压) 0-480VAC				
控制电阻 Control Voltage	外接控制电位器 (470KΩ/2W)				
通态压降 On Voltage	≤ 1.5VAC	≤ 1.5VAC	≤ 1.5VAC	≤ 1.5VAC	≤ 1.5VAC
断态漏电流 Off-state Leakage Current	≤ 4mA	≤ 4mA	≤ 4mA	≤ 4mA	≤ 4mA
通断时间 Time Off	≤ 10ms	≤ 10ms	≤ 20ms	≤ 20ms	≤ 20ms
介质耐压 Dielectric Strength	2500VAC	2500VAC	2500VAC	2500VAC	2500VAC
绝缘电阻 Insulation Resistance	100MΩ/500VDC	100MΩ/500VDC	100MΩ/500VDC	100MΩ/500VDC	100MΩ/500VDC
环境温度 Ambient Temperature	-25~+75℃	-25~+75℃	-25~+75℃	-25~+75℃	-25~+75℃
安置方式 Mounting Methods	M4 螺栓固定 M4 Bolted fixed	M4 螺栓固定 M4 Bolted fixed	M4 螺栓固定 M4 Bolted fixed	M4 螺栓固定 M4 Bolted fixed	M4 螺栓固定 M4 Bolted fixed
工作指示 The work instructions	LED (红色: 故障) LED (Red:The fault)	LED (红色: 故障) LED (Red:The fault)	LED (红色: 故障) LED (Red:The fault)	LED (红色: 故障) LED (Red:The fault)	LED (红色: 故障) LED (Red:The fault)
重量 Weight	50g	50g	70g	70g	70g

外形尺寸
Overall dimensions

说明: 1、负载 10A, 必须装散热器, 40A 以上加风扇强冷或水冷。

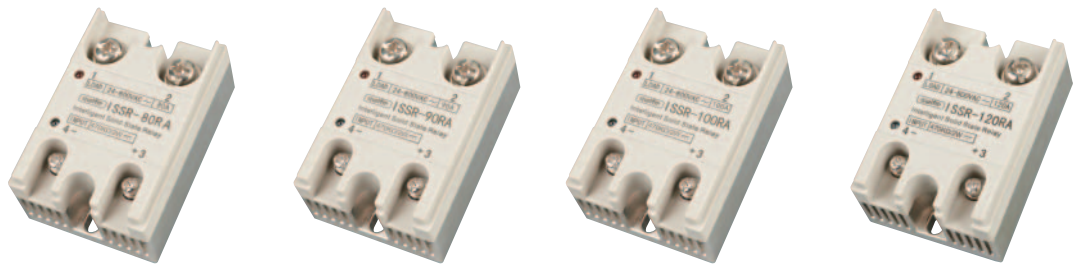
2、使用感性负载时, 请务必在输出端并接一压敏电阻, 取值为负载电压的 1.6-1.9 倍。

Instruction: 1、load current 10A, should install radiator, upwards 40A should add fan for force cooling or water cooling.

2、When using Inductive load, please add a varistor at the output side, the value is 1.6-1.9 multiple of load voltage.

智能单相交流阻控式调压器

Intelligent Voltage Regulator—Single Phase—Resistive Type—AC



产品型号 Model	ISSR-80RA	ISSR-90RA	ISSR-100RA	ISSR-120RA
负载电流 Load Current	80A	90A	100A	120A
负载电压 Load Voltage	(电阻型调压) 0-480VAC			
控制电阻 Control Voltage	外接控制电位器 (470K Ω /2W)			
通态压降 On Voltage	$\leq 1.5VAC$	$\leq 1.5VAC$	$\leq 1.5VAC$	$\leq 1.5VAC$
断态漏电流 Off-state Leakage Current	$\leq 4mA$	$\leq 4mA$	$\leq 4mA$	$\leq 4mA$
通断时间 Time Off	$\leq 10ms$	$\leq 10ms$	$\leq 10ms$	$\leq 10ms$
介质耐压 Dielectric Strength	2500VAC	2500VAC	2500VAC	2500VAC
绝缘电阻 Insulation Resistance	100M Ω /500VDC	100M Ω /500VDC	100M Ω /500VDC	100M Ω /500VDC
环境温度 Ambient Temperature	-25~+75 $^{\circ}C$	-25~+75 $^{\circ}C$	-25~+75 $^{\circ}C$	-25~+75 $^{\circ}C$
安置方式 Mounting Methods	M4 螺栓固定 M4 Bolted fixed	M4 螺栓固定 M4 Bolted fixed	M4 螺栓固定 M4 Bolted fixed	M4 螺栓固定 M4 Bolted fixed
工作指示 The work instructions	LED (红色: 故障) LED (Red:The fault)	LED (红色: 故障) LED (Red:The fault)	LED (红色: 故障) LED (Red:The fault)	LED (红色: 故障) LED (Red:The fault)
重量 Weight	135g	135g	135g	135g

外形尺寸 Overall dimensions				
	64.0L×45.0W×28.0H	64.0L×45.0W×28.0H	64.0L×45.0W×28.0H	64.0L×45.0W×28.0H

说明: 1、负载 10A, 必须装散热器, 40A 以上加风扇强冷或水冷。

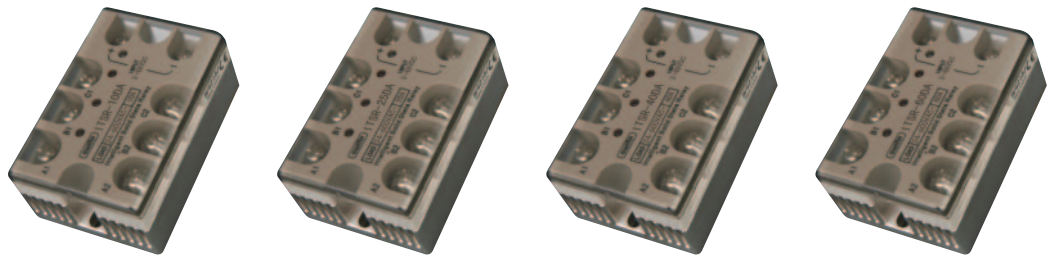
2、使用感性负载时, 请务必在输出端并接一压敏电阻, 取值为负载电压的 1.6-1.9 倍。

Instruction: 1、load current 10A, should install radiator, upwards 40A should add fan for force cooling or water cooling.

2、When using Inductive load, please add a varistor at the output side, the value is 1.6-1.9 multiple of load voltage.

智能三相直流控制交流固态继电器

Intelligent three phase DC controlled AC solid state relay



产品型号 Model	ITSR-10DA	ITSR-25DA	ITSR-40DA	ITSR-60DA
负载电流 Load Current	10A	25A	40A	60A
负载电压 Load Voltage	24-600VAC	24-600VAC	24-600VAC	24-600VAC
控制电压 Control Voltage	3-48VDC	3-48VDC	3-48VDC	3-48VDC
控制电流 Control Current	10-30mA	10-30mA	10-30mA	10-30mA
通态压降 On Voltage	≤ 2.5VAC	≤ 2.5VAC	≤ 2.5VAC	≤ 1.3VAC
断态漏电流 Off-state Leakage Current	≤ 2mA	≤ 2mA	≤ 2mA	≤ 4mA
通断时间 Time Off	≤ 10ms	≤ 10ms	≤ 10ms	≥ 20ms
介质耐压 Dielectric Strength	2500VAC	2500VAC	2500VAC	2500VAC
绝缘电阻 Insulation Resistance	100MΩ/500VDC	100MΩ/500VDC	100MΩ/500VDC	100MΩ/500VDC
环境温度 Ambient Temperature	-25~+75℃	-25~+75℃	-25~+75℃	-25~+75℃
安置方式 Mounting Methods	M4 螺栓固定 M4 Bolted fixed	M4 螺栓固定 M4 Bolted fixed	M4 螺栓固定 M4 Bolted fixed	M4 螺栓固定 M4 Bolted fixed
工作指示 The work instructions	双 LED: (绿色: 工作; 红色: 故障) Double LED: (Green:Work;RED:The fault)	双 LED: (绿色: 工作; 红色: 故障) Double LED: (Green:Work;RED:The fault)	双 LED: (绿色: 工作; 红色: 故障) Double LED: (Green:Work;RED:The fault)	双 LED: (绿色: 工作; 红色: 故障) Double LED: (Green:Work;RED:The fault)
重量 Weight	135g	135g	135g	135g

外形尺寸 Overall dimensions				
	64.0L×45.0W×28.0H	64.0L×45.0W×28.0H	64.0L×45.0W×28.0H	64.0L×45.0W×28.0H

说明: 1、负载 10A, 必须装散热器, 40A 以上加风扇强冷或水冷。

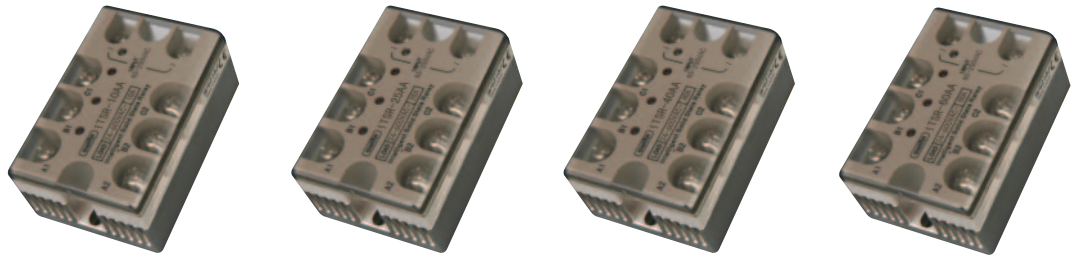
2、使用感性负载时, 请务必在输出端并接一压敏电阻, 取值为负载电压的 1.6-1.9 倍。

Instruction: 1、load current 10A, should install radiator, upwards 40A should add fan for force cooling or water cooling.

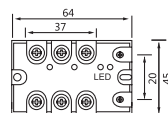
2、When using Inductive load, please add a varistor at the output side, the value is 1.6-1.9 multiple of load voltage.

智能三相交流控制交流固态继电器

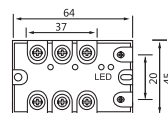
Intelligent three phase AC control AC solid state relay



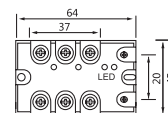
产品型号 Model	ITSR-10AA	ITSR-25AA	ITSR-40AA	ITSR-60AA
负载电流 Load Current	10A × 3 AC	25A × 3 AC	40A × 3 AC	60A × 3 AC
负载电压 Load Voltage	24-600VAC	24-600VAC	24-600VAC	24-600VAC
控制电压 Control Voltage	85-250VAC	85-250VAC	85-250VAC	80-250VAC
控制电流 Control Current	3-30mA	3-30mA	3-30mA	≤ 12mA
通态压降 On Voltage	≤ 1.5VAC	≤ 1.5VAC	≤ 1.5VAC	≤ 1.3VAC
断态漏电流 Off-state Leakage Current	≤ 4mA	≤ 4mA	≤ 4mA	≤ 4mA
通断时间 Time Off	≤ 10ms	≤ 10ms	≤ 10ms	≥ 20ms
介质耐压 Dielectric Strength	2500VAC	2500VAC	2500VAC	2500VAC
绝缘电阻 Insulation Resistance	100MΩ/500VDC	100MΩ/500VDC	100MΩ/500VDC	100MΩ/500VDC
环境温度 Ambient Temperature	-25~+75℃	-25~+75℃	-25~+75℃	-25~+75℃
安置方式 Mounting Methods	M4 螺栓固定 M4 Bolted fixed	M4 螺栓固定 M4 Bolted fixed	M4 螺栓固定 M4 Bolted fixed	M4 螺栓固定 M4 Bolted fixed
工作指示 The work instructions	双 LED: (绿色: 工作; 红色: 故障) Double LED: (Green:Work;RED:The fault)	双 LED: (绿色: 工作; 红色: 故障) Double LED: (Green:Work;RED:The fault)	双 LED: (绿色: 工作; 红色: 故障) Double LED: (Green:Work;RED:The fault)	双 LED: (绿色: 工作; 红色: 故障) Double LED: (Green:Work;RED:The fault)
重量 Weight	135g	135g	135g	135g

外形尺寸
Overall dimensions

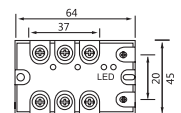
64.0L×45.0W×28.0H



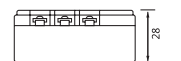
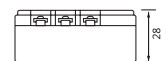
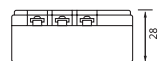
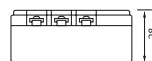
64.0L×45.0W×28.0H



64.0L×45.0W×28.0H



64.0L×45.0W×28.0H



说明: 1、负载 10A, 必须装散热器, 40A 以上加风扇强冷或水冷。

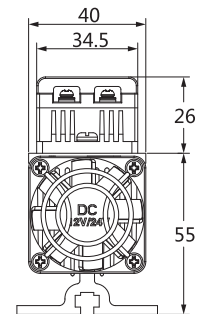
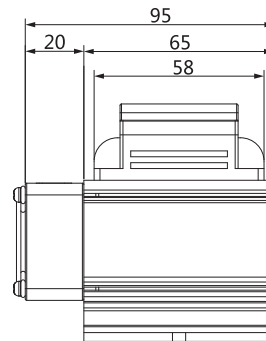
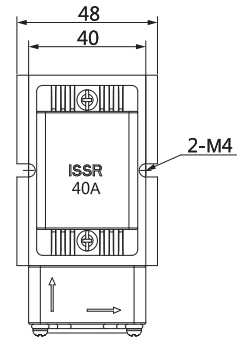
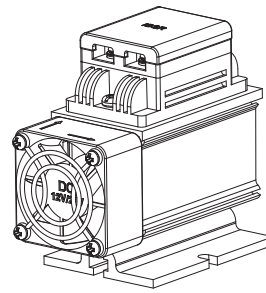
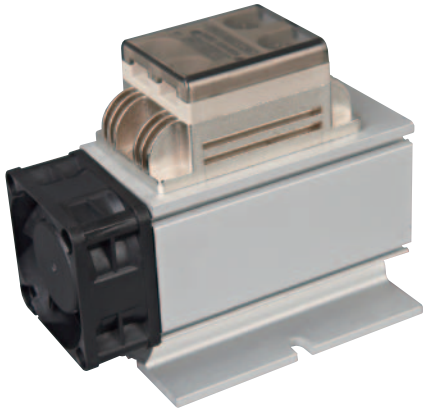
2、使用感性负载时, 请务必在输出端并接一压敏电阻, 取值为负载电压的 1.6-1.9 倍。

Instruction: 1、load current 10A, should install radiator, upwards 40A should add fan for force cooling or water cooling.

2、When using Inductive load, please add a varistor at the output side, the value is 1.6-1.9 multiple of load voltage.

ISSR/ITSR 系列
散热器一体型
Radiator integration

www.qwifm.com(China)
www.qwdhc.com(International)



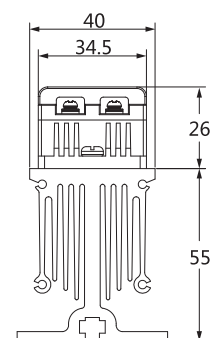
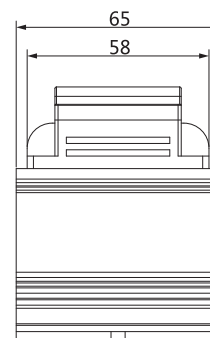
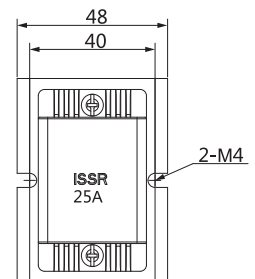
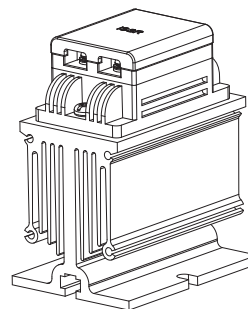
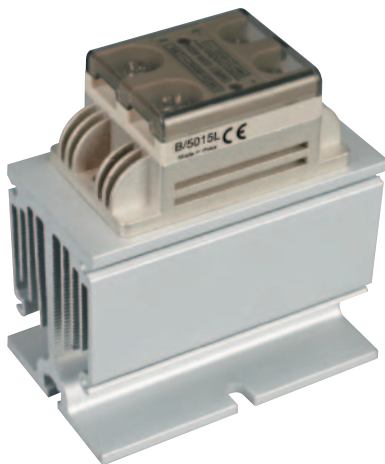
螺丝 / 端子规格 Screws/terminals

名称 Name	输入 Input	负载 Load
螺丝 Screws	M3.0	M4.0
端子 Terminals	RNB1.25-3.0	RNBS5.0-4.0

- ISSR-25
- ISSR-40
- ISSR-60

● 根据实际负载电流及工作环境选择
Choose according to the actual load current and working environment

● 风机 - 选购附件
Fan - optional accessories



螺丝 / 端子规格 Screws/terminals

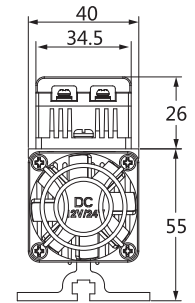
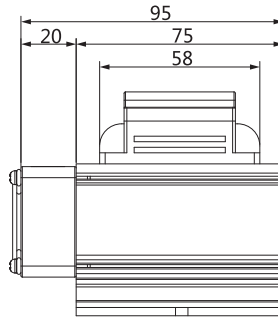
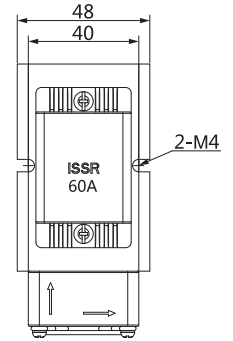
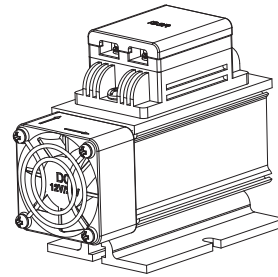
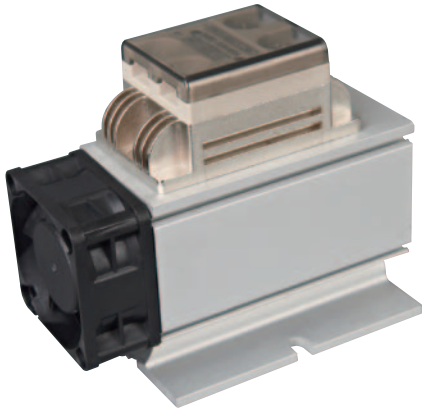
名称 Name	输入 Input	负载 Load
螺丝 Screws	M3.0	M4.0
端子 Terminals	RNB1.25-3.0	RNBS5.0-4.0

- ISSR-10
- ISSR-25

● 根据实际负载电流及工作环境选择
Choose according to the actual load current and working environment

ISSR/ITSR 系列 散热器一体型 Radiator integration

www.qwifm.com(China)
www.qwdhc.com(International)



螺丝 / 端子规格 Screws/terminals

名称 Name	输入 Input	负载 Load
螺丝 Screws	M3.0	M4.0
端子 Terminals	RNB1.25-3.0	RNBS5.0-4.0

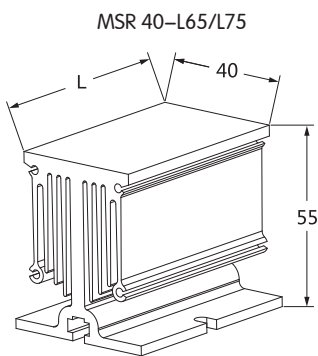
ISSR-40

ISSR-60

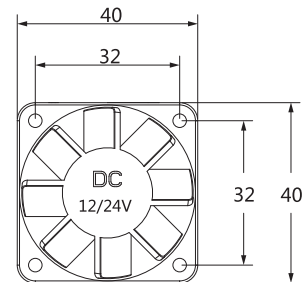
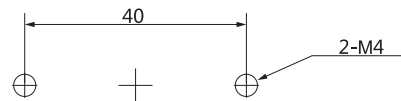
●根据实际负载电流及工作环境选择
Choose according to the actual load current and working environment

●风机 - 选购附件
Fan - optional accessories

拓展型散热器 Extended radiator



表面安装加工尺寸图
Surface mount machining dimension drawing



型号 Model	L
MSR40	65 75

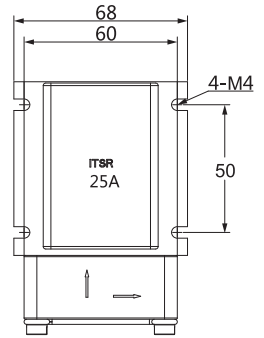
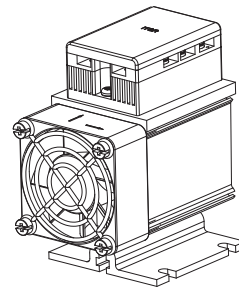
适配 Adaptive
ISSR/ESSR 10A 25A 40A 60A

双滚珠轴承散热器风机
额定电压: DC12V/24V
DC cooling fan with double ball bearings
Rated voltage :DC12V/24V

●根据实际负载电流及使用环境内部空间大小, 温度, 通风散热条件和工作频率选择散热器和散热风机的安装。
To select whether the radiator is extended and the installation of the cooling fan according to the actual load current and the use of the environment, the size of the internal space, temperature, ventilation, heat dissipation conditions and operating frequency.

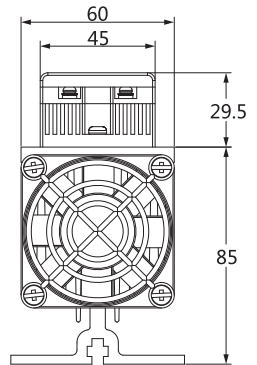
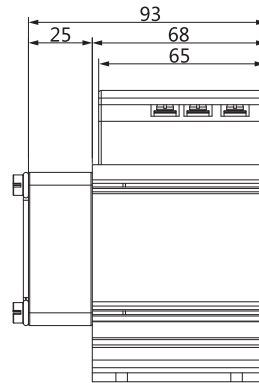
ISSR/ITSR 系列
散热器一体型
Radiator integration

www.qwifm.com(China)
www.qwdhc.com(International)



螺丝 / 端子规格 Screws/terminals

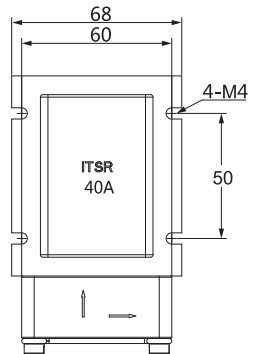
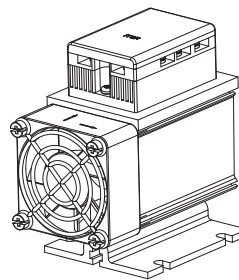
名称 Name	输入 Input	负载 Load
螺丝 Screws	M3.0	M4.0
端子 Terminals	RNB1.25-3.0	RNBS5.0-4.0



ITSR-25 □□

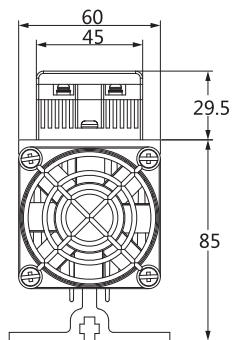
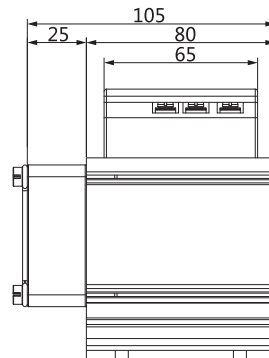
- 根据实际负载电流及工作环境选择
Choose according to the actual load current and working environment

- 风机 - 选购附件
Fan - optional accessories



螺丝 / 端子规格 Screws/terminals

名称 Name	输入 Input	负载 Load
螺丝 Screws	M3.0	M4.0
端子 Terminals	RNB1.25-3.0	RNBS5.0-4.0



ITSR-25 □□

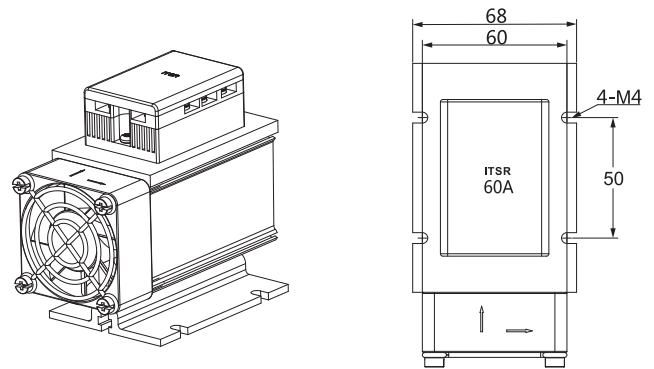
ITSR-40 □□

- 根据实际负载电流及工作环境选择
Choose according to the actual load current and working environment

- 风机 - 选购附件
Fan - optional accessories

ISSR/ITSR 系列 散热器一体型 Radiator integration

www.qwifm.com(China)
www.qwdhc.com(International)

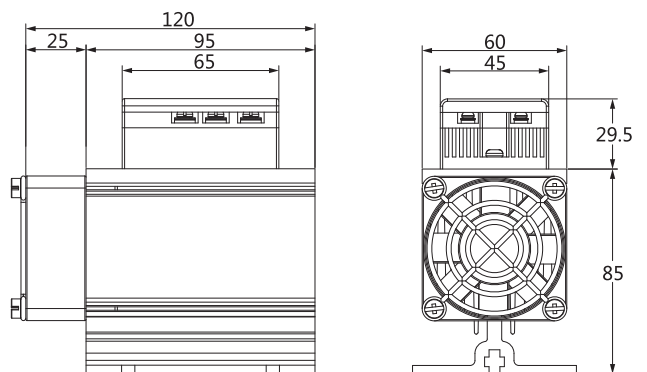


螺丝 / 端子规格 Screws/terminals

名称 Name	输入 Input	负载 Load
螺丝 Screws	M3.0	M4.0
端子 Terminals	RNB1.25-3.0	RNBS5.0-4.0

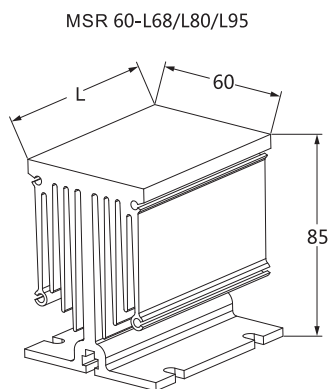
ITSR-40 □□
ITSR-60 □□

- 根据实际负载电流及工作环境选择
Choose according to the actual load current and working environment

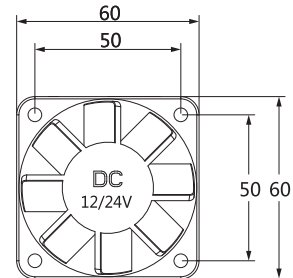
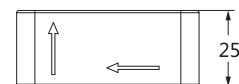
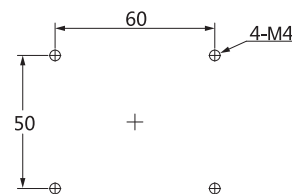


- 风机 - 选购附件
Fan-optional accessories

拓展型散热器 Extended radiator



表面安装加工尺寸图
Surface mount machining dimension drawing



6025M12S/24S

型号 Model	L
	68
MSR60	80
	95

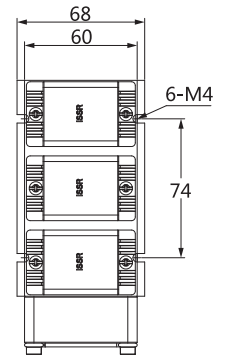
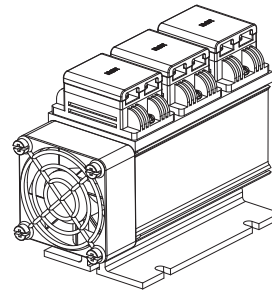
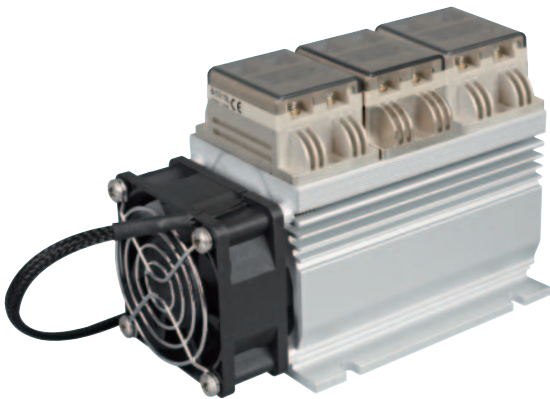
适配 Adaptive
ISSR/ESSR 80A 100A 120A
ITSR/ETSR 25A 40A 60A

双滚珠轴承散热器风机
额定电压: DC12V/24V
DC cooling fan with double ball bearings
Rated voltage: DC12V/24V

- 根据实际负载电流及使用环境内部空间大小, 温度, 通风散热条件和工作频率选择散热器和散热风机的安装。
To select whether the radiator is extended and the installation of the cooling fan according to the actual load current and the use of the environment, the size of the internal space, temperature, ventilation, heat dissipation conditions and operating frequency.

ISSR/ITSR 系列
散热器一体型
Radiator integration

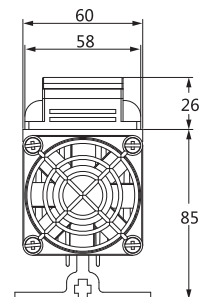
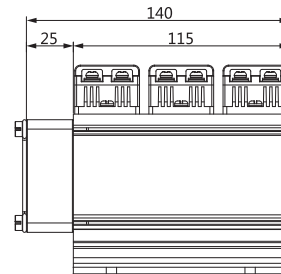
www.qwifm.com(China)
www.qwdhc.com(International)



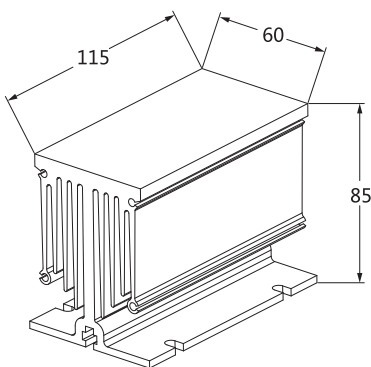
3 组单相 Three groups of single phase

- ISSR-10 □□
- ISSR-25 □□
- ISSR-40 □□
- ISSR-60 □□

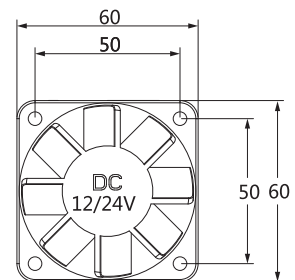
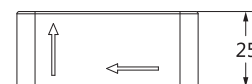
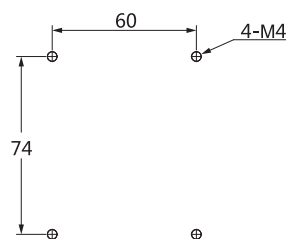
- 10A/25A 无需安装散热风机
- 40A/60A 需考虑实际负载电流，工作环境，通风条件选择是否安装散热风机
- For 10A/25A, No need to install cooling fan
- For 40A/60, It is necessary to consider the actual load current, working environment and ventilation conditions, and choose to install the cooling fan



● 风机 – 选购附件
Fan – optional accessories



表面安装加工尺寸图
Surface mount machining dimension drawing



6025M12S/24S

型号 Model: MSR 60-L115

双滚珠轴承散热器风机
额定电压: DC12V/24V
DC cooling fan with double ball bearings
Rated voltage: DC12V/24V

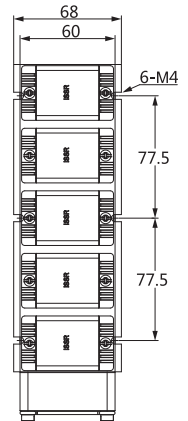
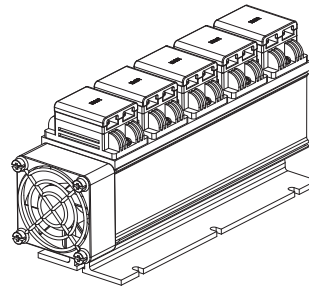
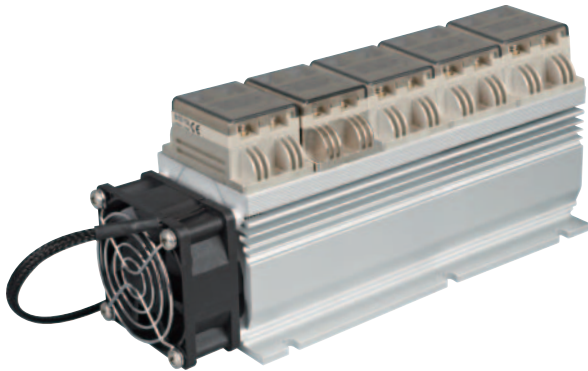
- 根据实际负载电流及使用环境内部空间大小，温度，通风散热条件和工作频率选择散热器和散热风机的安装。
To select whether the radiator is extended and the installation of the cooling fan according to the actual load current and the use of the environment, the size of the internal space, temperature, ventilation, heat dissipation conditions and operating frequency.

ISSR/ITSR 系列

散热器一体型

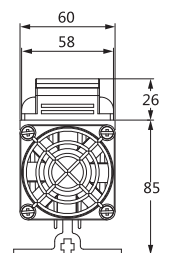
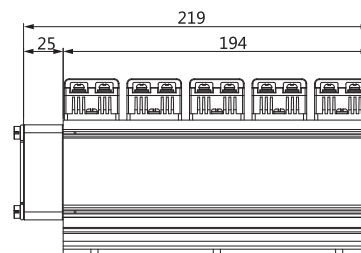
Radiator integration

www.qwifm.com(China)
www.qwdhc.com(International)



螺丝 / 端子规格 Screws/terminals

名称 Name	输入 Input	负载 Load
螺丝 Screws	M3.0	M4.0
端子 Terminals	RNB1.25-3.0	RNBS5.0-4.0

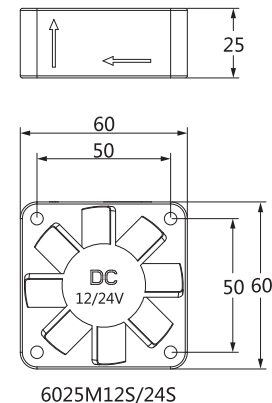
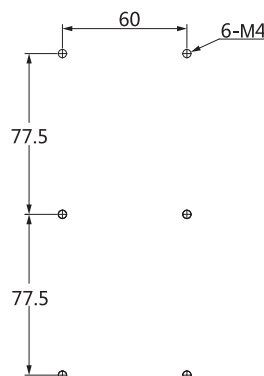
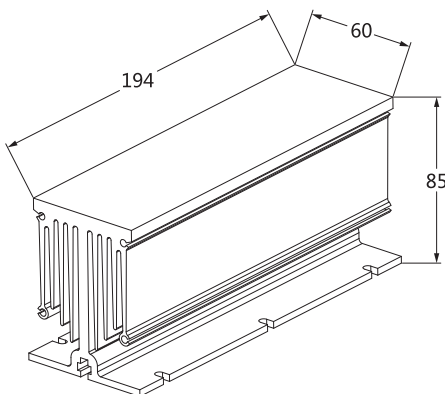


ITSR-40 □□
ITSR-60 □□

● 根据实际负载电流及工作环境选择
Choose according to the actual load current and working environment

● 风机 - 选购附件
Fan - optional accessories

表面安装加工尺寸图 Surface mount machining dimension drawing



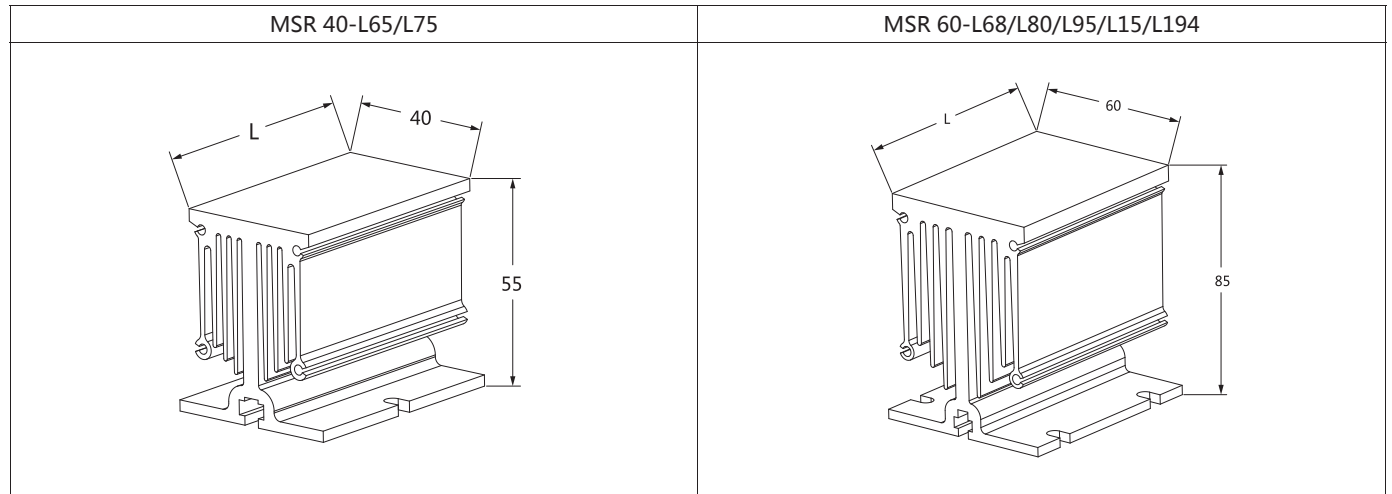
型号 Model: MSR 60-L194

双滚珠轴承散热器风机
额定电压: DC12V/24V
DC cooling fan with double ball bearings
Rated voltage: DC12V/24V

● 根据实际负载电流及使用环境内部空间大小, 温度, 通风散热条件和工作频率选择散热器和散热风机的安装。
To select whether the radiator is extended and the installation of the cooling fan according to the actual load current and the use of the environment, the size of the internal space, temperature, ventilation, heat dissipation conditions and operating frequency.

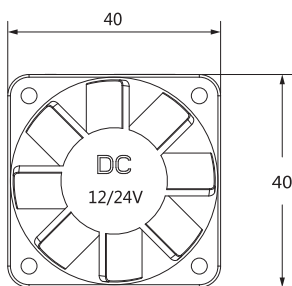
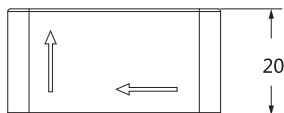
散热器、风机型 Radiator, Fan type

专用散热器 Special radiator 单位 Unit: mm

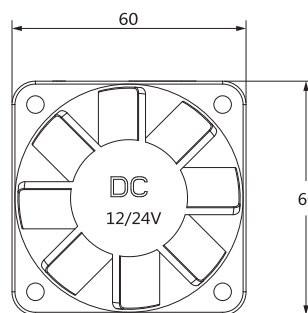
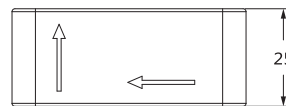


- 小体积，最大化散热表面积设计
- 散热专业铝合金材料
- 表面特殊氧化处理，颜色均匀，耐腐蚀性强
- 散热风机简单安装结构设计
- 多规格可选，您可以选择最佳散热器 – 使用与各种不同环境

- Small volume, maximum design of heat dissipation surface
- Aluminum alloy material for heat dissipation
- Surface special oxidation treatment, uniform color, strong corrosion resistance
- Simple installation structure design of heat radiation fan
- Multi spec optional, you can choose the best radiator to use a variety of different environments



4020M12S/24S



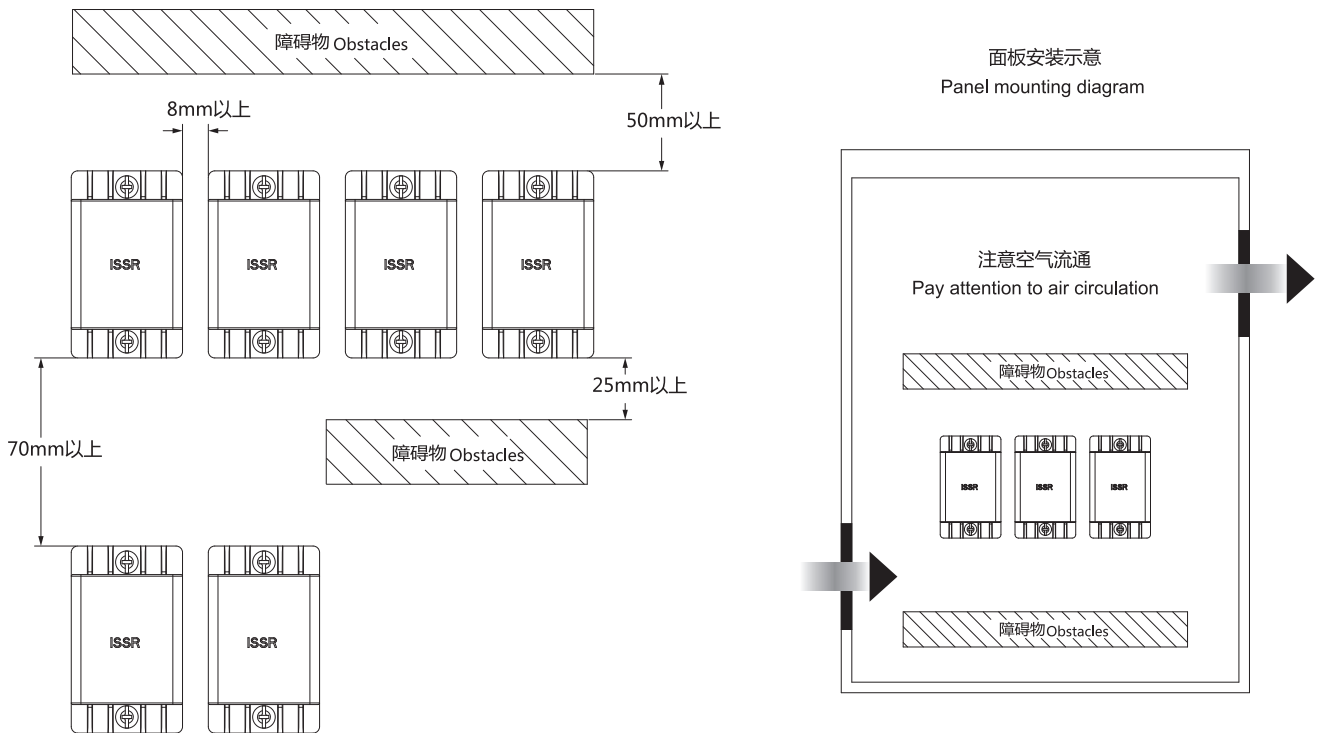
6025M12S/24S

- 可配套供应
Can form a complete set of supply

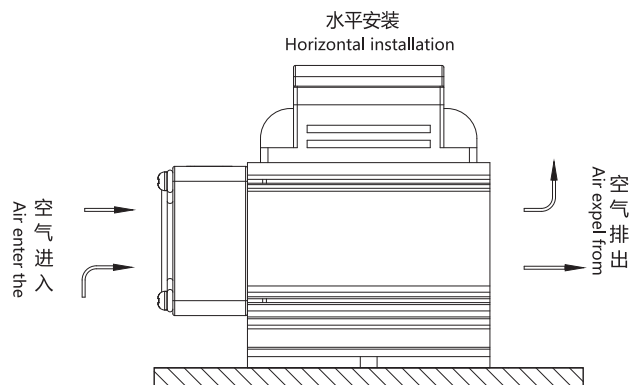
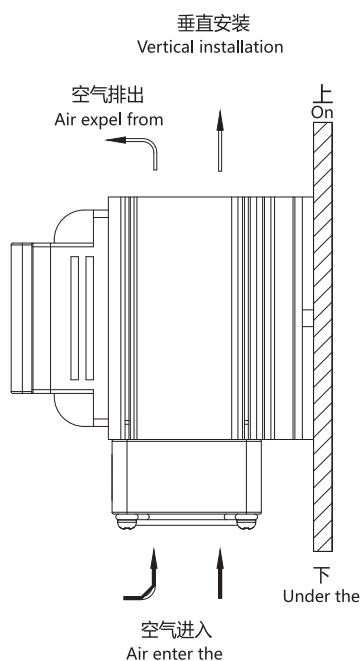
材质: 高强度增强尼龙塑料
结构: 双滚珠轴承散热器风机
额定电压: DC12V/24V
Material: high strength reinforced PA plastic
Structure: double ball bearing
Rated voltage: DC12V/24V

注意事项 – 安装说明

Matters needing attention / Installation instructions



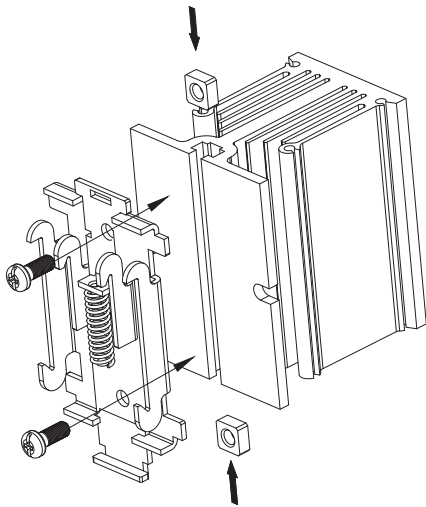
散热器一体型 Radiator integration



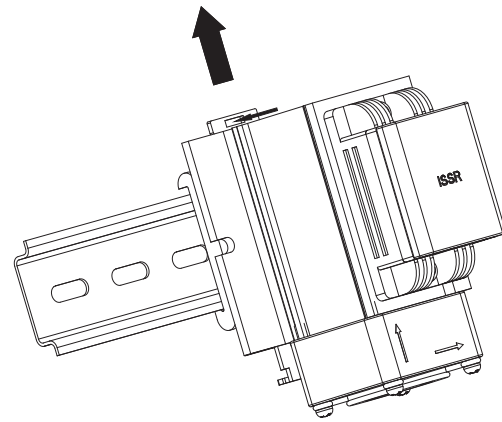
- 垂直安装时，散热风机必须是朝下 / 水平安装时，需朝空气流入口方向。
- 水平安装时无安装散热风机时，请使用额定电流容量 50% 以下。
- 设备工作时，环境温度会上升，务必注意空气的流通。
- 安装在机柜内时，机柜需安装风扇，吸风口和排气口周围空气一定要流通。
- When installed vertically, the cooling fan must be mounted downwards/horizontally, and shall be directed towards the inlet of the air flow.
- Please use the rated current capacity below 50% when no cooling fan is installed in the horizontal installation.
- When the equipment is working, the temperature of the environment will rise, so the circulation of air must be noticed.
- When installing in the cabinet, the cabinet shall be equipped with fan, and the air inlet and exhaust port must be circulated.

注意事项 – 安装说明

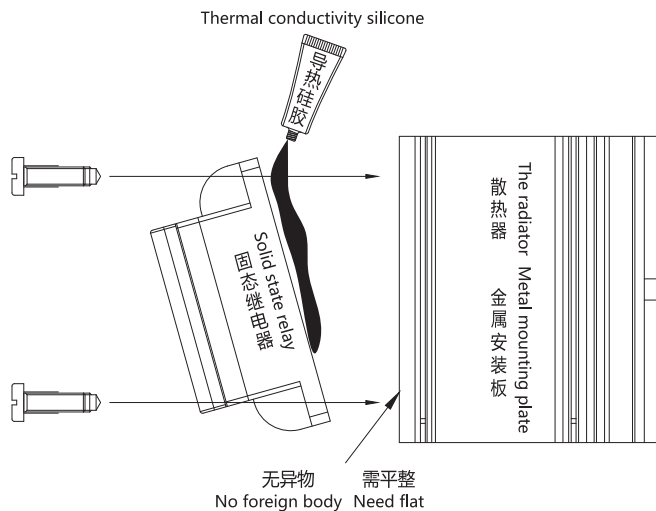
Matters needing attention / Installation instructions



- 如要将散热器安装于 DIN 导轨上，首先将散热器与导轨安装面板进行安装 (如上图)
- If the radiator needs to be installed on DIN rail, first install the radiator and guide mounting panel (as shown above figure).
- 固定螺丝 Fixed screw: M4*8
- Fixed screw: M4*8
- 固定螺母 Fixed nut: M4 方型 Square 8*8 厚度 Thickness 3.5–4mm
- Fixed nut: M4 Square 8*8 Thickness 3.5–4mm



- 如需从 DIN 导轨上拆除继电器，用螺丝刀插入小箭头方向的孔沿大箭头方向拨开即可。
- If you want to remove the relay from the DIN rail, insert the hole in the direction of the small arrow with the screwdriver and poke it in the direction of the big arrow.



- 继电器必须安装在散热器上或具有散热性能金属板上。
- 切勿安装于玻璃，木材，塑料等非金属材料上。
- 安装时必须涂抹导热硅胶。
- 散热器或安装底板表面需平整，无异物，弯曲，变形等。
- 安装固定时，请手动捏紧固定螺丝，使产品与散热器或底板贴紧安装。
- The relay must be mounted on a radiator or cooling pin with thermal performance.
- Do not install on glass, wood, plastic and other non-metallic materials.
- When installing, it is required to apply heat conductive silica gel.
- The surface of radiator or the bottom of the installation board should be smooth, without foreign matter, bending, deformations and so on.
- When installig, please tighten the fastening screws by hand, so that the product can be tightly installed with the radiator or the bottom board.

- 通用导轨安装面板
Universal rail mounting panel
- 通用导轨安装面板
Option parts are available

